

NATIONAL AUTOMATIC ENROLMENT RETIREMENT SAVINGS AUTHORITY (NAERSA) - DSP, IRELAND

Payroll API Specification Guide

Version 1.6.4.3

May 2026

Document Control

Version No.	Release Date	Amendments
1.0.0	30 th January 2025	First Version
1.1.0	March 2025	<ol style="list-style-type: none"> 1. Removed Data Item employerAepnNumber 2. Added Data items aepnDownloadDateTime, enrolmentDate 3. Added partial processing for contribution updates
1.2	April 2025	<ol style="list-style-type: none"> 1. Character set information added 2. AEPN events explanation simplified and two tables consolidated into 1. Removed sentence that only Active AEPNs are downloaded. Field description of aepnChangeEvent & enrolmentStatus also changed 3. Additional explanation for underpayment, overpayment, payment after leaving, contributions after AEL breach 4. Added data items for Recon APIs 5. Removed the fields employmentID, employeePPSN, AEPNIssueFromDate from Download AEPN details service as discussed with DSP 6. Removed path parameters which were being returned in the response body as a playback. X-Trace-ID is the only reference which is being returned in the response http header. The incoming X-trace-ID sent by the payroll software is returned as is. 7. Fields added for correction and deletion in upload contributions API - lineItemIDsToDelete & previousLineItemID 8. payReason : The reasons and the codes have been changed
1.4	April 2025	<ol style="list-style-type: none"> 1. Contribution submission – New submissions, alterations and deletions combined into one request 2. Additional information provided regarding lineItemIDs – when new ones need to be generated; when old ones can be used; how to use them for alterations. 3. Additional information provided regarding how the post-cessation payment (12-month contribution continuation) feature will work 4. Corrections made to JSON and SOAP schemas 5. More samples added/ changed as per the new request structures 6. Clarification provided regarding agentTAIN field. 7. Re-introduced JSON header parameters so that both manual upload and submission via API can be done via the same request body. Http header parameters will still need to get added for the API request. 8. Provided additional information on how contributions will work for INPA and PAADJ payReason code. Added additional fields linktaxYear, linkpayrollRunReference, linklineItemID to support this feature. 9. Clarification provided that times mentioned in the document are Irish Standard Time. 10. Errors and warnings register added.
1.5	May 2025	<ol style="list-style-type: none"> 1. Changed JSON and SOAP schemas and samples to include inputFields in the responses.
1.6	June 2025	<ol style="list-style-type: none"> 1. Added sample signing string in the JSON samples 2. reconDetails API corrected the JSON sample - removed fileDate and added employmentID

Version No.	Release Date	Amendments
		<ol style="list-style-type: none"> In reconDetails added submissionID in the response. Updates in the sample, JSON and SOAP schemas. Corrected the datetime regex for aepnDownloadDateTime in updateContributions and downloadpayrollaepn APIs Note added regarding sequence of query parameters in signing string for JSON APIs
1.6.1	June 2025	<ol style="list-style-type: none"> Field name "aepnEnrolmentDate" corrected for 'downloadPayrollAEPN' API in the JSON schema. The spelling was incorrect. New error coded published in the error register. New codes marked with version 1.2 in the spreadsheet. SOAP PROTOCOL has been changed from 1.1 to 1.2, as part of this Content-type and namespaces had been updated. There are no changes to the XML Schema.
1.6.2	Aug 2025	<ol style="list-style-type: none"> JSON and SOAP schema updates to support updatecontribution passing only deletelineitems dataset. Related sample updates. reconDetails JSON schema corrected, batchNumber removed from inputFields in the response. Addition of partial success response to the checkStatus API. Scenario where few lineitems were successful, few were in error and few had warnings. Updates to the Error register, messages have been re-phrased, and few new messages listed. Http Status codes updated for messages. X-trace-ID regex is added Synchronised the signing string in the samples. Exit Date modification mechanism has been detailed. Tolerance information has been added. Rounding-off policy details have been specified. Header level validation information has been detailed. Header part of all api's request xml's updated in samples xml's.
1.6.3	Sep 2025	<ol style="list-style-type: none"> ReconSummary request sample updated—removed empty space at the end of field names Mandatory fields added in data object of all JSON response samples of APIs. New error code added in error registry, related to agentTAIN being a mandatory field for request with agent Cert. ROEED status added in payReason in schema of updatecontributions. New status values added in the field contributionUploadStatus in the schema of the API checkstatus. Regex for employeeFirstName & employeeFamilyName updated to match Revenue in the schemas for downloadaepn, uplupdatecontributions and recondetails APIs. DELETED status added to recondetails API, field lineitemSubmissionStatus. Description of the behaviour of the lineitemID deletion in case the lineitemID is not found is explained.
1.6.4	Sep 2025	<ol style="list-style-type: none"> Data object in response schema of all APIs has been made optional. Error object in response schema of all APIs has been made optional. Recondetails response the following fields are optional submissionID, employeePPSN, employeeFirstName, employeeFamilyName, employmentID, aepnNumber,

Version No.	Release Date	Amendments
		<p>payDate,lineitemSubmissionStatus, lineitemSubmissionDate, grossPay, erContribution,eeContribution,payReason and exitDate</p> <ol style="list-style-type: none"> ErrorDetails API response the following objects have been made optional ContributionErrors, contributionWarnings, recordErrors and recordWarnings Regex for employeeFirstName & employeeFamilyName corrected in the xsds for the following APIs Downloadpayrollaepn, updatecontributions and recondetails Http status code updated from 400 to 422 for inputfield validation failures. Steps to process error responses of all APIs provided.
1.6.4.1	Nov 2025	<ol style="list-style-type: none"> Check Status Soap API sample error scenario error code changed from MFFERR060 to MFFERR091. Error Details SOAP API sample error scenario error code changed from MFFINTERR0030 to MFFINTERR091. Recon Details SOAP API sample error scenario error code changed from MFFINTERR0030 to MFFINTERR091. Error Registry updated with new error codes. Added 4 new events in Table1: Correlation between Employee and Employer AEPN number and status and updated schma's for those 4 events. Regex for Employee first name and family name removed from the JSON and SOAP schemas
1.6.4.2	Nov 2025	<ol style="list-style-type: none"> Status values added to enrolmentStatus field in both xml and json sch for downloadpayrollaepn schema's. Pattern added for softwareVersion and softwareUsed fields in all api schema's.
1.6.4.3	May 2026	<ol style="list-style-type: none"> Added new event in Table : Correlation between Employee and Employer AEPN number and status. Three new error codes (MFFINTERR0065,MFFINTERR098 and MFFINTERR099) has been added in rest api error list. Two new error codes (MFFINTERR0065 and MFFINTERR099) has been added in soap api error list.

Abbreviations

Acronym	Expansion / Description
AEL	Annual Earnings Limit
AEPN	Automatic Enrolment Payroll Notification

API	Application Programming Interface
EE	Employee
ER	Employer
NAERSA	National Automatic Enrolment Retirement Savings Authority
ROS	Revenue Online Services
SPA	State Pension Age
TCS BaNCS	Core policy administration which is being implemented for NAERSA.

Contents

1	INTRODUCTION	8
2	GENERIC PRINCIPLES	9
2.1	GENERAL CONSIDERATIONS	9
2.2	REQUEST AUTHENTICATION AND AUTHORISATION	9
2.3	REQUEST AND RESPONSE PROCESSING	9
2.3.1	<i>Requests.....</i>	<i>10</i>
2.3.2	<i>Character set.....</i>	<i>10</i>
2.3.3	<i>Signing string.....</i>	<i>10</i>
2.3.4	<i>Responses.....</i>	<i>10</i>
2.3.5	<i>Success response.....</i>	<i>10</i>
2.3.6	<i>Error response.....</i>	<i>10</i>
2.3.7	<i>Input data error handling</i>	<i>12</i>
2.4	BEHAVIOUR OF APIS AND FUNCTIONAL CORRELATION BETWEEN THEM	12
2.4.1	<i>AEPN download</i>	<i>12</i>
2.4.2	<i>Contribution Submission.....</i>	<i>13</i>
2.4.3	<i>Contribution submission status</i>	<i>18</i>
2.4.4	<i>Contribution submission error details.....</i>	<i>18</i>
2.4.5	<i>Contribution reconciliation summary.....</i>	<i>19</i>
2.4.6	<i>Contribution reconciliation details.....</i>	<i>19</i>
3	API SPECIFICATION.....	20
3.1	DOWNLOAD AEPN DETAILS SERVICE	20
3.1.1	<i>Request input fields.....</i>	<i>20</i>
3.1.2	<i>Response output fields.....</i>	<i>21</i>
3.1.3	<i>JSON Sample</i>	<i>23</i>
3.1.4	<i>SOAP Sample.....</i>	<i>25</i>
3.2	UPLOAD THE CONTRIBUTIONS	27
3.2.1	<i>Request input fields.....</i>	<i>28</i>
3.2.2	<i>Response output fields.....</i>	<i>31</i>
3.2.3	<i>JSON Sample</i>	<i>32</i>
3.2.4	<i>SOAP Sample.....</i>	<i>36</i>
3.3	RETRIEVE SUBMITTED CONTRIBUTION STATUS	39
3.3.1	<i>Request input fields.....</i>	<i>39</i>
3.3.2	<i>Response output fields.....</i>	<i>40</i>
3.3.3	<i>JSON Sample</i>	<i>41</i>
3.3.4	<i>SOAP sample.....</i>	<i>43</i>
3.4	CONTRIBUTION ERROR DETAILS.....	45
3.4.1	<i>Request input fields.....</i>	<i>46</i>
3.4.2	<i>Response output fields.....</i>	<i>46</i>
3.4.3	<i>JSON Sample</i>	<i>47</i>
3.4.4	<i>SOAP Sample.....</i>	<i>50</i>
3.5	CONTRIBUTION RECONCILIATION SUMMARY.....	52
3.5.1	<i>Request input fields.....</i>	<i>53</i>
3.5.2	<i>Response output fields.....</i>	<i>53</i>
3.5.3	<i>JSON Sample</i>	<i>54</i>
3.5.4	<i>SOAP Sample.....</i>	<i>57</i>
3.6	CONTRIBUTION RECONCILIATION DETAILS	59

3.6.1	<i>Request input fields</i>	60
3.6.2	<i>Response output fields</i>	60
3.6.3	<i>JSON Sample</i>	62
3.6.4	<i>SOAP Sample</i>	64
4	APPENDIX	68
4.1	JSON SCHEMA	68
4.2	XML SCHEMA.....	68
4.3	ERRORS & WARNINGS REGISTER	68

Table 1: Correlation between Employee and Employer AEPN number and status.	13
Table 2: Submitted Amount lesser than expected amount (Within tolerance)	17
Table 3:Submitted Amount lesser than expected amount (Outside tolerance)	17
Table 4:Submitted Amount greater than expected amount (Within tolerance)	17
Table 5:Submitted Amount greater than expected amount (Outside tolerance)	18
Table 6:Attributes of AEPN download API.....	20
Table 7:Header parameters of AEPN download API	21
Table 8:Response output header fields of success response of AEPN download.....	21
Table 9:Response fields of AEPN download API.....	22
Table 10:Parameters for REST request of AEPN download API.	23
Table 11:Parameters for SOAP request of AEPN download API.	25
Table 12:Attributes of contribution submission API	28
Table 13:Header parameters for contribution submission	29
Table 14: Input data item fields for contribution submission	31
Table 15:Response headers of the upload contributions API	31
Table 16:Output field structure of contribution submission API	32
Table 17:Parameters for REST request of contributions submission API.....	32
Table 18:Parameters for SOAP request of contribution submission API.	36
Table 19:Attributes of contribution status API.....	39
Table 20:Request headers of contribution status API	40
Table 21:Response headers of contribution status API.....	41
Table 22:Response structure of contribution status API.....	41
Table 23:Parameters for REST request of contribution status API.	41
Table 24:Parameters for SOAP request of contribution status API.....	43
Table 25:Attributes of contribution errors API.....	45
Table 26:Request headers of contribution error details API.....	46
Table 27:Response headers of contribution error details API	47
Table 28:Response data items of contribution error details API.	47
Table 29:Parameters for REST request of contribution error details API.	48
Table 30:Parameters for SOAP request of contribution error details API.	50
Table 31:Attributes of contribution reconciliation summary API	52
Table 32:Request headers of contribution reconciliation summary API	53
Table 33:Response headers of contribution reconciliation summary API	54
Table 34:Response data items of contribution reconciliation summary API.	54
Table 35:Parameters for REST request of contribution reconciliation summary API.	54
Table 36:Parameters for SOAP request of contribution reconciliation summary API.	57
Table 37:Attributes of contribution reconciliation details API.....	59
Table 38:Request headers of contribution reconciliation details API.....	60
Table 39:Response headers of contribution reconciliation details API.....	61
Table 40:Response data items of contribution reconciliation details API.	62
Table 41:Parameters for REST request of contribution reconciliation details API.....	62
Table 42:Parameters for SOAP request of contribution reconciliation details API.....	65

1 Introduction

This document provides a comprehensive specification of the APIs to be used by any payroll software integrating with NAERSA (TCS BaNCS); outlining its functionality, endpoints, authentication mechanisms, and data structures. It serves as a guide for implementers to integrate and interact with the API efficiently. TCS BaNCS is the core policy administration system being implemented for this auto-enrolment scheme for DSP and NAERSA.

The goal is to offer clear and concise information to ensure seamless communication between systems, enabling robust application development and integration.

The following is the list of services that will be available. All these services will be available as REST services as well as SOAP.

- **AEPN Download** – It fetches AEPN details from NAERSA (TCS BaNCS). This API will provide the list of employees for a registered employer with necessary data items to enable action.
- **Contribution Submission** – It sends contribution details for submission to NAERSA (TCS BaNCS).
- **Contribution submission status** - It enables a check on the status of contribution submission to NAERSA (TCS BaNCS).
- **Contribution Submission Error** - This will return the errors in the input data for a given submission.
- **Contribution reconciliation summary** - This API will provide details of contribution submissions across a date range for reconciliation.
- **Contribution reconciliation details** - This API will provide details of contribution submissions for a given payroll run reference for reconciliation.

The authentication mechanism will be based on Revenue Online Services(ROS) digital certificates issued by Revenue. The current process used by all payroll software to send data to Revenue involves generating a digital signature and attaching it to the request, along with the X509 file. This process must be followed as is. Each API call must follow the authentication mechanism.

This document does not cover the mechanism defined by Revenue, instead it focuses on the mechanism and data required for integration with the NAERSA (TCS BaNCS) APIs only.

2 Generic Principles

2.1 General Considerations

The connection between payroll software and the REST and SOAP will be encrypted using transport layer security (TLS) 1.1 and TLS 1.2 (all the other versions of TLS will be disabled as will all versions of secure sockets layer (SSL)).

2.2 Request authentication and authorisation

All incoming requests will be authenticated using the ROS digital certificates which have been issued to the employers and agents by Revenue. Payroll software also needs to send digital signatures as per the current Revenue specifications. The digital signature of the incoming requests will also be validated as per the current integration pattern with Revenue. It will include the following

- Electronic Signature Verification
 - Verify Signature in request matches re-generated string
 - Verify cert is not Expired, Revoked, Valid or Expiring
 - Verify cert is tied to Employer Registration Number and Agent Tain (if present)

Given below is the sequence flow for this process.

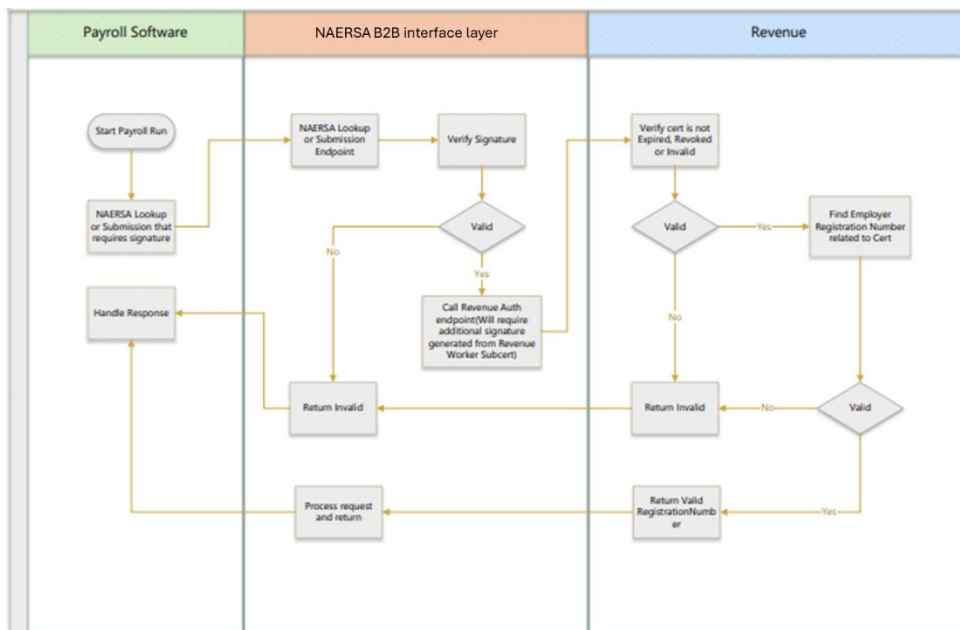


Figure 1: Sequence flow for authorisation by Revenue (original source: Revenue presentation)

2.3 Request and response processing

Post authentication and authorisation, incoming requests will be processed for the business content. Generic sequence flow is given below.

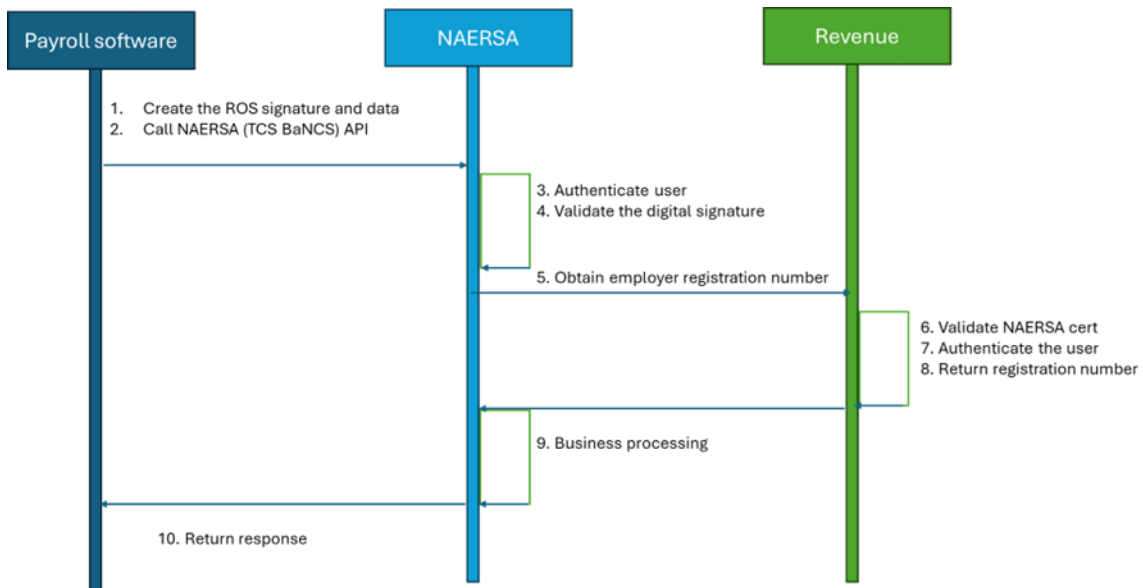


Figure 2: Interaction between payroll software, NAERSA (TCS) APIs and Revenue API.

2.3.1 Requests

Requests will be supported in both the SOAP and REST format. Individual API endpoints will be published for the same. Details of the APIs are below in later sections. There will be no difference in the input and output other than the format for web-services and rest format. The authentication and authorisation mechanism will also remain the same for both formats.

2.3.2 Character set

UTF-8 character set will be supported throughout the application for the special letters in the Irish language.

2.3.3 Signing string

The signing string in JSON requests has the query parameters included. The order of the query parameters in the signing string needs to be the same as that given in the document. Examples given along with each API.

2.3.4 Responses

Responses will also be in both XML and JSON format as per the incoming requests. Details for each API are given below. Every response will have the following headers:

Content-Type: Indicates the media type of the response body.

Cache-Control: Specifies caching directives for the client and intermediaries.

Pragma: Automatically added.

Status-Code: HTTP status code

2.3.5 Success response

- 200 will indicate a successful operation.

2.3.6 Error response

HTTP status codes will be used to indicate error responses for each API call. The response of the “[errordetails](#)” API call to return the business validation errors for the contribution data is different.

- For the 4XX error codes, client software is expected to make necessary corrections and resubmit the request.
 - 400 Bad request. Invalid path, parameter or value supplied. Mandatory parameters not present.
 - 401 Authentication is required or has failed.
 - 403 Insufficient permissions to process request. Authorisation has failed.
 - 404 Resource not found.
 - 405 Request method is not supported for the requested resource.

Please refer to the error register for the exact http status code being returned.

- For the 500 error code, client software can resubmit the request without making any corrections as they are server related errors.
 - 500 Unhandled Exceptions in processing the request.
 - It will also be returned for the following scenarios:
 - TCS Certificate and signature verification by Revenue API did not succeed.
 - Revenue API is unavailable or not responding.
- Below is a sample of an error response section of an API

```
JSON
"errors": {
  "empty": false,
  "errorDetails": [
    {
      "errorCode": "MFFERR091",
      "message": "No Data Found with input parameters"
    }
  ]
}
```

```
SOAP
<b2b:errors>
  <b2b:empty>>false</b2b:empty>
  <b2b:errorDetails>
    <b2b:error>
      <b2b:errorCode>MFFERR001</b2b:errorCode>
      <b2b:message>Incorrect Employer Reg ID.</b2b:message>
    </b2b:error>
  </b2b:errorDetails>
</b2b:errors>
```

While processing the response check for the value returned in the field “empty”. This will be false for error situations. In an error situation ignore the response returned in the “data” section of the response.

2.3.7 Input data error handling

For errors related to input data and business validation errors an “[errordetails](#)” API is published which will provide all the details in both XML and JSON format.

Data being submitted for contributions, will be processed in two phases. 1st phase will check only for completeness and size constraints. 2nd phase will be for business validations. Below are a few examples.

1. Example 1: During contribution data submission, only 12,000 records can be sent in a single batch/submission. There is a limit of 8MB on the incoming submission size, this has been estimated to be 12,000 records. It is expected that payroll software submits data in batches, each batch not exceeding 12,000 records. If a submission is made with a record count of more than 12,000, then it would be identified as “wrong input”, which prohibits further input processing. In such scenarios there will be no partial processing, and the full submission will be rejected immediately. In the response the API will return the error details. Examples are given below for each API.
2. Example 2: During contribution data submission the incoming data in terms of numbers and completeness is fine but it fails a business validation, for example: PPSN is not sent or the PPSN format is not correct. When the contribution is submitted the payload will be accepted as-is. During the processing of the contribution data the business validation error will be identified. The correct data will be processed and only the erroneous records will be rejected. The errors and warnings can be obtained after the processing by calling the error API. Descriptions and examples of these APIs are given below. For business validation errors there will be partial processing and only the erroneous records need to be re-submitted post corrections.

2.4 Behaviour of APIs and functional correlation between them

There are 5 APIs published for contribution information submission. There is functional correlation between them as given below

2.4.1 AEPN download

- a. This API fetches the list of participants for a given employer registration ID. Under a given employer, for a single employment of the participant, a single AEPN entry will be returned. If the participant has dual employment under the same employer, then two AEPNs will be returned.
- b. For a given employment a participant has an AEPN number which reflects the number of changes in the AEPN status of the participant for that employment.
- c. Listed below are the AEPN change events and their associated contribution rates. Certain AEPN change events cause the contribution rate also to change. In the AEPN download the employees with status “Active, Opted Out, Suspended, Left Employment – Extended” will be downloaded. Payroll software must look at the contribution rate and submit the contributions. If the contribution rate is 0.00% then no contribution is to be made. But the participant records with 0.00% contribution rate will be kept in the AEPN to highlight to the employer that although payroll will be generated for the participants there will be no AE contribution due.

Event	Enrolment Status	Contribution Rate
Auto Enrolment	Active	Regular
Opt Out	Opted Out	0.00%
Suspension	Suspended	0.00%
Enrolment	Active	Regular

Event	Enrolment Status	Contribution Rate
AEL Breach	Active	0.00%
Next Financial Year post AEL Breach	Active	Regular
Contribution Rate Change 1	Active	Regular
Contribution Rate Change 2	Active	Regular
Contribution Rate Change 3	Active	Regular
Left Employment Initiation *	Left Employment - Extended	Regular
Exempt	Exempt	0.00%
Death	Death	0.00%
De-Enrolment	De-enrolled	0.00%
Retirement	Retired	0.00%
AEL Breach	Exempt	0.00%

Table 1: Correlation between Employee and Employer AEPN number and status.

* AEPN will be locked at the prevailing contribution rate for 12 months and contributions will continue to be collected in event of post-cessation payments. When the cessation is reported, NAERSA will update the AEPN although contribution rate will not be changed, and the contribution rate will be frozen for the employee record for the next 12 months from cessation date. After 12 months the employee record will not be included in the AEPN list for that employer.

- d. This API returns a maximum of 12,000 records (8 MB) in each request. Hence the API needs to be invoked multiple times for a higher number of enrolled employees in AE. In the response, the following fields are also returned so that the payroll software can identify the number of API calls required.
 - i. Batch number – this is the current request number. For the first request this would be 1, and 2 for the second request and so on.
 - ii. Max batch number – This is the maximum number of requests required. For a company of 36,000 lines this would be 3. In such a scenario payroll software will have to call the API thrice.
 1. First call - no-batch number or 1.
 2. Second call – Batch number = 2
 3. Third call - Batch number = 3
- e. AEPNs will be updated by a nightly batch job. In order to ensure correct deduction applied AEPN download needs to be called at the latest point before the payroll finalisation and following any revision to gross pay during the payroll process. Each AEPN download returns the AEPN download date & time, which needs to be tracked by payroll software. Each AEPN download provides the AEPN number of the participant for that date and time. Payroll software, while submitting the contributions, needs to provide the AEPN number of the participant systematically, for that employment, along with the date and timestamp of its download, for each participant at the record level. The download date & timestamp may vary across participants. NAERSA will match the AEPN number provided with the AEPN number in NAERSA at the time of the download date & time, for processing. If the numbers do not match, the contribution will be processed, but a warning sent back to the payroll.

2.4.2 Contribution Submission

- a. This API is to be invoked to submit contributions information. Only 12,000 records (8 MB) can be submitted in each request. However, multiple submissions can be made.
- b. To differentiate between multiple submissions the following fields are to be used
 - i. Payroll run reference – this is a payroll software generated identifier. This will be common across all submissions for a given payroll run.
 - ii. Submission ID – This is an incremental sequence. Use this to differentiate between submissions.
 - iii. Tax Year
 - iv. Employer registration number

Note: where an agent is operating on behalf of an employer they must use the employer's registration number and pass the agentTAIN also in this API.

These 4 fields or 5 fields (with agentTAIN, depending on the scenario) in combination will uniquely identify each submission request.

It is expected that the AEPN download list is used as the baseline for the number of contributions to be submitted. If data is returned for a lesser number of participants, then NAERSA will assume that there was no contribution for those participants who were omitted in this payroll run and there is a likelihood of them being submitted in a later payroll run. Payroll runs should ensure that contributions of all eligible participants for that payroll run are reported.

If NAERSA continues to receive no data for participants for a period to be determined, contact with the employer or agent will be likely and the matter becomes a compliance issue.

- c. NAERSA will support alterations to the payroll submissions.
 - i. Alterations timeframe

There will be a specific timeframe within which the alteration will be allowed. Please find below elaboration of the alteration window. All times referred below are in Irish Standard Time.

1. The system will look at all contributions files that are submitted and check the pay dates therein.
2. If the pay date is in the past or on the day of receipt of the contribution file, it will close the alterations window at 18:30 on the date of receipt. No alterations can be made after 18:30 .
3. If the pay date is in the future, it will close the alteration window at 18:30 on the expected pay date.

When a con file submission is received with multiple pay dates NAERSA (TCS BaNCs) will close the alterations window for each pay date at 18:30 on the relevant pay date.

Scenario 1: Contribution file received on Mon 7th with a Mon 7th pay date (i.e. same date).

Alterations are possible in scenario 1 only before 18:30 on Mon 7th. If payroll attempts to make an alteration after 18:30 they will get a warning to say not accepted.

Scenario 2: Contribution file received on Mon 7th with a Wed 9th pay date (i.e. future date).

Alterations are possible in scenario 2 only before 18:30 on Wed 9th. This leaves a window from the time the contributions file was sent on Mon 7th up until 18:30 on Wed 9th for alterations to be made. If payroll attempts to make an alteration after 18:30 on Wed 9th they will get a warning to say not accepted.

ii. Alteration mechanism

When the employer / payroll provider intends to alter an existing employee record, they will proceed with a new submission within an existing payroll run reference. For the impacted employee, a new lineitemID has to be provided, and in the previousLineitemID field the the lineitemID of the employee record which was submitted earlier needs to be provided. With this, NAERSA will override the previous contribution, identified by the previousLineitemID of the employee and replace it with the new value provided by the newly generated lineitemID. Alterations can happen only with in the same payroll run reference. Submission ID can be different. New lineitemID has to be generated, and the existing lineitemID cannot be reused for any other or same employee within the same pay roll run reference.

LineitemID needs to be unique for an employee for the given Employer Reg No, Tax Year and Payroll Run Reference combination. For any changes within this combination a new lineitemID needs to be generated.

- d. For business validation errors partial processing will be done. In a submission of 100 records, if there are errors in 10 of the records, the data of the 90 correct entries will be processed. Error information will be returned for the 10 incorrect entries. Only erroneous records will have to be resubmitted post corrections by the payroll software.
- e. Future dated data can also be submitted. The data will be accepted on submission and will be processed later, on the given pay date.
- f. Deletion of data is possible. A list of line items can be provided which will be deleted only prior to 18.30 Irish Standard Time on paydate. Details are provided below in the API specifications. LineitemID needs to be unique for an employee for the given Employer Reg No, Tax Year and Payroll Run Reference combination. For any changes within this combination a new lineitemID needs to be generated. Deleted lineitemIDs can be re-used in the next payroll run reference if required.
 - i. During deletion the lineitemID needs to be passed. If the lineitemID is not found for the given Employer Reg No, Tax Year and Payroll Run Reference combination then an error will be shown against the to be deleted lineitemID. In the recondetails API response also this to be deleted lineitemID will be present with no associated data fields like first name, family name, PPSN, contribution details etc. All associated fields values will not be returned.
- g. There are reason-codes to justify any mismatch of the employee contribution (to the contribution expected by NAERSA as per the contribution rate, for the given gross pay) at the line-item level. This is applicable to underpayment and overpayment of employee contributions only. This will give NAERSA a mechanism to track the reason and continue further processing or in certain cases track the employees' contribution later. Following are the identified reason codes
 - v. Insufficient Nett Pay (Code: INPA)

Payroll will use this code when there is a contribution amount provided in the file which is less than the expected amount based on rates and employer intend to adjust the remaining amount in next payroll. For example – insufficient nett pay after PAYE and PRSI, or zero nett pay or negative nett pay.

1. If an employee contribution underpayment is made without INPA payReason code, then the amount will be accepted and a warning issued, saying the payReason was not provided. A debt will be raised for any shortfall.
2. If an employee contribution underpayment is made with INPA payReason code, then the amount will be accepted and a warning issued, saying the additional amount is expected in a later payroll run.

vi. Pay Adjustment (Code: PAADJ)

Payroll can only use this code when there was an INPA code submitted in a previous payroll run. This will be used to notify NAERSA that payroll is attempting to reconcile the previous shortfall notified by INPA reason code in submitting a larger than expect contribution. If employer provides PAADJ as the reason code and provides additional contribution amount more than expected as per the contribution rate, NAERSA will not show any warning and accept the entire contribution.

If Pay Adjustment (PAADJ) code is used following fields are mandatory

1. Previous Payroll Run Reference - The Payroll Run Reference of the earlier lineitemID where Insufficient Net Pay (INPA) was mentioned, which is going to be adjusted in current submission.
2. Reference Tax Year - The Tax Year of the earlier lineitemID where Insufficient Net Pay (INPA) was mentioned, which is going to be adjusted in current submission,
3. Reference lineitemID - The lineitemID of the earlier lineitemID where Insufficient Net Pay (INPA) was mentioned, which is going to be adjusted in current submission.

Otherwise, if an overpayment is provided with no payReason provided, NAERSA will show a warning message and will also accept contribution upto the amount derived by the contribution rate on the gross pay only.

Underpayment of employer contributions will be identified as an error and the contribution record will be rejected. In case of overpayment of employer contributions only the expected amount, as derived from the gross pay and contribution rate will be accepted.

h. Exit Date alterations: Exit dates can be changed to a future or past date if a wrong value has been sent earlier or deleted completely. Rules regarding changes to the exit date are as follows:

1. If the exit date is to be changed before the payDate then the new date needs to be submitted prior to 18.30 Irish Standard Time on paydate. The alteration mechanism is the same. A new unique submissionID, and new unique lineitemID needs to be provided. The payrollRunReference and the taxYear can be the same. previousLineitemID needs to be provided and must refer to the earlier lineitemID which is to be changed. No reason code needs to be provided.
2. If the correction is done post 18.30 Irish Standard Time on paydate then it should be sent with a new payroll run – where the payrollRunReference etc will be newly generated. No reason code needs to be provided.
3. In the exit date needs to be removed then a reason code “ROEED” needs to be provided. If the ROEED reason code is provided, the system will expect a blank exit date in the corresponding field. Submission rules are the same above.

- i. Tolerance: Tolerance is a system feature but does not confer permission to underpay or overpay due contributions. NAERSA will monitor application & impact of tolerance and may remove at any time. Tolerance value is 0.05 cents.

The tables below explain the different scenarios and the behaviour.

Scenario	Employer Contribution Validation	Employee Contribution Validation	Collect Amount	Remarks
Submitted Amount less than expected amount (Within Tolerance)	No	No	Submitted Amount	System will not throw any error or warning as this is within the tolerance limits. The submitted amount will be collected
Gross Pay - 10000 Submitted ER Contribution - 149.98 Submitted EE Contribution - 149.98 Expected as per Rate - 150.00	No	No	149.98	

Table 2: Submitted Amount lesser than expected amount (Within tolerance)

Scenario	Employer Contribution Validation	Employee Contribution Validation	Collect Amount	Remarks
Submitted Amount less than expected amount (More than Tolerance)	Yes	Yes	Record Error / Warning	System will validate and throw error / Warning as per contribution validation rule.
Gross Pay - 10000 Submitted ER Contribution - 148.28 Submitted EE Contribution - 148.28 Expected as per Rate - 150.00				

Table 3: Submitted Amount lesser than expected amount (Outside tolerance)

Scenario	Employer Contribution Validation	Employee Contribution Validation	Collect Amount	Remarks
Submitted Amount more than expected amount (within Tolerance)	No	No	Expected Amount	System will not throw any error or warning as this is within the tolerance . At the same time system with raise/collect the expected amount.
Gross Pay - 10000 Submitted ER Contribution - 150.04 Submitted EE Contribution - 150.04 Expected as per Rate - 150.00	No	No	150	

Table 4: Submitted Amount greater than expected amount (Within tolerance)

Scenario	Employer Contribution Validation	Employee Contribution Validation	Collect Amount	Remarks
Submitted Amount more than expected amount (more than Tolerance)	No	Yes	Expected Amount	System will validate and throw error / Warning as per contribution validation rule. At the same time system with raise/collect the expected amount.

Scenario	Employer Contribution Validation	Employee Contribution Validation	Collect Amount	Remarks
Gross Pay - 10000 Submitted ER Contribution - 154.76 Submitted EE Contribution - 154.76 Expected as per Rate - 150.00	No	Yes	150	

Table 5:Submitted Amount greater than expected amount (Outside tolerance)

- j. Rounding of values: 2-decimal place rounding is implemented. EUR 1.273 will be rounded off to EUR 1.27 and EUR 1.278 will be rounded off to EUR 1.28. This applicable to both employee and employer contribution amounts. This is not applicable to gross pay.
- k. Header level validations: These are validations which when failed, the entire submission will be rejected. The following header level validations will be done, in addition to the validations already listed in the error register. When header level validations fail the entire submission is rejected and the lineitems are not processed. An error is returned for the entire submission with the http status code of 400. The error response will be returned in the error section of the API response. These submissions will not be visible in checkstatus or errordetails or the recon summary and details APIs.
 - vii. Duplicate File Submission: A submission is considered unique when the combination of taxYear, employerReg, payrollRunReference and submissionID is unique. Any duplicate submission with the same taxYear, employerReg, payrollRunReference and submissionID combination will be considered duplicate and rejected with an error.
 - viii. Contribution submission exceeding 12K records.
 - ix. Invalid Employer Registration number: This means that the employer is not registered in the NAERSA system. This situation can occur when payslips of employees of this employer have not reached NAERSA from Revenue. The mechanism to correct this situation is to contact NAERSA.
- l. AEL breach: The €80,000 threshold for contributions refers to gross pay earned in a calendar year. Once an employee has reached the €80,000 gross pay threshold in a given year, they will cease to make contributions on earnings after the pay period in which the threshold is breached. This means that there will be scenarios where contributions (both employer and employee) are paid on gross pay above €80,000.
 - For example, if participant reaches €78500 in July (monthly paid). Participant reaches €82500 in August, NAERSA expects contribution on €4000 gross and THEN new AEPN will be issued with 0% rates. A nightly batch job updates AEPN and would update the AEPN in this instance to ensure no further contributions are made within the current tax year.

2.4.3 Contribution submission status

This will revert with the status of the contribution data processing for each submission. It is recommended to call this API to check the status of the run. If an error status is returned payroll software should call the error API below to get the line-item level errors.

2.4.4 Contribution submission error details

This will give all the errors in the input data for a given submission.

2.4.5 Contribution reconciliation summary

This API will provide details of contribution submissions across a date range for reconciliation

2.4.6 Contribution reconciliation details

This API will provide details of contribution submissions for a given payroll run reference for reconciliation

3 API specification

3.1 Download AEPN details service

As the name suggests, the service will retrieve the AEPN details of employees for a given employer.

Attribute	Value
URI for REST	/payrollapi/v1/aepn/downloadpayrollaepn/{employerReg}
URI for SOAP	/payrollapi/v2/aepn/downloadpayrollaepn
Supported methods	GET
Description	This service is used to get AEPN details of an employer. Provides the list of employees and some attributes
Input Media type (MIME)	application/soap+xml, application/json
Status code for successful response	200
Response	As detailed in Section below
Output Media type	application/soap+xml, application/json

Table 6:Attributes of AEPN download API.

3.1.1 Request input fields

3.1.1.1 Header fields

Field Name	Field Description	Mandatory	Example
Accept	Indicates the media types the client can handle	M	application/json,application/soap+xml
Content-Type	Indicates the media type of the request body	M	application/json,application/soap+xml
Cache-Control	Specifies caching directives for the client (e.g., no-cache, max-age=3600).	M	no-cache
X-trace-id	Used for end-to-end tracing. UUID to be generated by payroll software for the request. Regex: <code>^[0-9a-fA-F]{8}-[0-9a-fA-F]{4}-[1-5][0-9a-fA-F]{3}-[89abAB][0-9a-fA-F]{3}-[0-9a-fA-F]{12}\$</code>	M	550e8400-e29b-41d4-a716-446655440000
Date/X-Date	Date & time of creation of the request. Date or X-Date can be used as the field name.	M	2018-01-01T12:00:00.000Z
Host	Hostname of the service being called. This would be a fixed value for different environments. EXT: b2b.myfuturefund-nonprod.ie	M	b2b.myfuturefund-nonprod.ie
Signature	Digital signature generated using the private key of the ROS certificate. Should consist of keyId, algorithm, headers and signature. This is identical to the field expected by Revenue	M	Signature::keyId="MIIFejC..truncated", algorithm="rsa-sha512", headers="(request-target) host date",signature="dFQv2+RsH2..truncated"
employerReg	Employer registration number for which the data is to be fetched.	M	1234567T
softwareUsed	Name of payroll software used for calling the API. This will be used for helpdesk purposes.	M	Payroll Software
softwareVersion	Version of payroll software used for calling the API. This will be used for helpdesk purposes.	M	1.2.2
agentTAIN	Tax Advisor Identification Number. Required if request submission is done by agent on behalf of employer using ROS agent certs.	O	99999A

Field Name	Field Description	Mandatory	Example
batchNumber	Not required in the first call (default output will be 1) but required in subsequent requests. Used for pagination or batching of submissions which exceed 12,000 records. <ul style="list-style-type: none"> • First request value = 1 • Second request value = 2 Can be incremented to the max batch number returned as part of the API response to the first request	O	3

Table 7:Header parameters of AEPN download API

3.1.2 Response output fields

Given below are the output fields for a success response.

3.1.2.1 Header fields

Field Name	Field Description	Example
Accept	Media type of the response	application/json
Content-Type	Media type of the response	application/json
Cache-Control	Specifies caching directives for the client. This will always be set to no-cache	no-cache
Status-code	http status code	200 for success
X-trace-id	Used for end-to-end tracing. UUID which was sent as part of the request.	550e8400-e29b-41d4-a716-446655440000

Table 8:Response output header fields of success response of AEPN download

3.1.2.2 Data items

The following fields will be returned in the response

Field Name	Field Description	Repeats	Example
requestType	Structural element of the response	N	aepnResponse
totalCount	Count of records returned for the employer registration number	N	24000
batchNumber	Used to indicate pagination or batching. Data is returned in batches if there are more than 12,000 records. Each batch can have a max of 12,000 records. In the first response this number will be 1 and in the second it will be 2 and so on. When a subsequent request is raised for the next batch of AEPN the batch number has to be mandatorily passed as an input with its value as batchNumber+1 to get the next set of records	N	1
maxBatchNumber	The maximum number of batches. So if there are 36,000 records then 3 will be returned (i.e., 36,000/12,000). To get the complete set of AEPN records for the employer it is necessary that number of requests sent is equal to the maxBatchNumber, each with request with and incremented batchNumber as explained above.	N	2
aepnResponseBody	Structural Element	N	aepnResponseBody
aepnDataset	This will include the fields below for each employee. The fields below will repeat for each employee.	N	aepnDataset

Field Name	Field Description	Repeats	Example
employeePPSN	PPSN of employee	Y	7001790JA
employmentID	Company given unique employee ID	Y	923456E
employeeFirstName	Given first name of employee	Y	Róisín
employeeFamilyName	Given family name of employee	Y	O'Donnell
enrolmentStatus	Refer to the table "Correlation between Employee and Employer AEPN number and status." in this section for further details. This is related to the AEPN change events. Depending on the status the contribution rate and hence the contribution can change. <ul style="list-style-type: none"> • Active: Continued contribution is expected at the prevailing rate • Opted Out: Contribution rate becomes 0% and no further contribution is expected until any further status change. • Suspended: Contribution rate becomes 0% and no further contribution is expected until any further status change. • Left Employment - Extended: Contribution is expected for the next 12 months at the current rate. Post 12 months no further contributions are to be made. 	Y	Active
aepnEnrolmentDate	This is the date of enrolment of the participant to the scheme. Format YYYY-MM-DD	Y	2025-10-12
aepnDownloadDateTime	The date and time stamp when the AEPN was downloaded. This date time stamp needs to be tracked and stored by the payroll software against each employee AEPN record. This field is used for matching AEPN numbers on the download date.	Y	2025-11-12 08:08:08
aepnIssueDate	The date when the AEPN was last updated.	Y	2025-10-12
aepnNumber	The updated AEPN number. This is a running sequence for an employee for an employment.	Y	4
aepnChangeEvent	There are several AEPN events possible like Opt In, Enrolment, Opt out, Cessation etc. Please refer to this table & section for details. Refer to the table "Correlation between Employee and Employer AEPN number and status." in this section for further details. <ul style="list-style-type: none"> • Auto Enrolment • Opt Out • Suspension • Enrolment • AEL Breach • Next Financial Year post AEL Breach • Contribution Rate Change 1 • Contribution Rate Change 2 • Contribution Rate Change 3 • Left Employment Initiation 	Y	Enrolement
erContributionRate	The current Employer contribution rate. For certain AEPN status the contribution rate will be 0. Refer to the table below.	Y	1.5
eeContributionRate	The current employee contribution rate. For certain AEPN status the contribution rate will be 0. Refer to the table below.	Y	1.5

Table 9:Response fields of AEPN download API

3.1.3 JSON Sample

3.1.3.1 Request Structure

URL: <https://<b2b.domainName>/payrollapi/v1/aepn/downloadpayrollaepn/{employerReg}>

Input type	Field Name	Mandatory
Http header	Accept	M
Http header	Content-Type	M
Http header	Cache-Control	M
Http header	X-trace-id	M
Http header	Date/X-Date	M
Http header	Host	M
Http header	Signature	M
Path param	employerReg	M
Query Param	softwareUsed	M
Query Param	softwareVersion	M
Query Param	agentTAIN	O
Query Param	batchNumber	O

Table 10:Parameters for REST request of AEPN download API.

3.1.3.2 Request Sample

URL: <https://<b2b.domainName>/payrollapi/v1/aepn/downloadpayrollaepn/1234567T>

Request Headers :

Http header Accept application/json
Http header Content-Type application/json; charset=UTF-8
Http header Cache-Control no-cache
Http header X-trace-id 550e8400-e29b-41d4-a716-446655440000
Http header Date/X-Date 2018-01-01T12:00:00.000Z
Http header Host b2b.myfuturefund-nonprod.ie
Http header Signature Signature::keyId="MIIFejC..truncated",algorithm="rsa-sha512",headers="request-target date host",signature="dFQv2+RsH2..truncated"

Path Parameters :

employerReg - "1234567T"

Query parameters :

softwareUsed - "Payroll_Software"
softwareVersion - "1.2.2"
agentTAIN - "99999A"
batchNumber - 3

headers & Signing String :

headers="(request-target) date host"

(request-target): get

/payrollapi/v1/aepn/downloadpayrollaepn/1234567T?softwareUsed=Payroll_Software&softwareVersion=1.2.2&agentTAIN=99999A&batchNumber=3

date: 2018-01-01T12:00:00.000Z

host: b2b.myfuturefund-nonprod.ie

Please note the order of the query parameters in the signing string.

This sample is for the given headers. It will vary for a different choice of headers.

3.1.3.3 Response Sample

Success scenario.

Response Headers :

Http header Accept application/json
 Http header Content-Type application/json
 Http header Cache-Control no-cache
 Http header Status-code 200
 Http header X-trace-id 550e8400-e29b-41d4-a716-446655440000

Response Body:

```
{
  "inputFields": {
    "employerReg": "1234567T",
    "softwareUsed": "Payroll Software",
    "softwareVersion": "1.2.2",
    "agentTAIN": "99999A"
  },
  "data": {
    "requestType": "aepnResponse",
    "totalCount": 24000,
    "batchNumber": 1,
    "maxBatchNumber": 2,
    "aepnResponseBody": {
      "aepnDataset": [
        {
          "employeePPSN": "7001790JA",
          "employmentID": "923456E",
          "employeeFirstName": "Róisín",
          "employeeFamilyName": "O'Donnell",
          "enrolmentStatus": "Active",
          "aepnEnrolmentDate": "2025-12-12",
          "aepnDownloadDateTime": "2025-11-12 08:08:08",
          "aepnIssueDate": "2025-12-12",
          "aepnNumber": 4,
          "aepnChangeEvent": "Enrolment",
          "erContributionRate": 1.5,
          "eeContributionRate": 1.5
        }
      ]
    },
    "errors": {
      "empty": true,
      "errorDetails": [
        {
          "errorCode": "",
          "message": ""
        }
      ]
    }
  }
}
```

Error scenario.

Response Headers :

Http header Accept application/json
 Http header Content-Type application/json

Http header Cache-Control no-cache
 Http header Status-code 200
 Http header X-trace-id 550e8400-e29b-41d4-a716-446655440000

Response Body:

```
{
  "inputFields": {
    "employerReg": "1234567T",
    "softwareUsed": "Payroll Software",
    "softwareVersion": "1.2.2",
    "agentTAIN": "99999A"
  },
  "data": {
    "requestType": "aepnResponse",
    "totalCount": 1,
    "batchNumber": 1,
    "maxBatchNumber": 1,
    "aepnResponseBody": {
      "aepnDataset": []
    }
  },
  "errors": {
    "empty": false,
    "errorDetails": [
      {
        "errorCode": "MFFERR091",
        "message": "No Data Found with input parameters"
      }
    ]
  }
}
```

3.1.4 SOAP Sample

3.1.4.1 Request Structure

URL: https://<b2b.domainName>/payrollapi/v2/aepn/downloadpayrollaepn

Input type	Field Name	Mandatory
Http header	Accept	M
Http header	Content-Type	M
Http header	Cache-Control	M
Http header	X-trace-id	M
SOAP Header	SOAP Header	M
SOAP Body	employerReg	M
SOAP Body	softwareUsed	M
SOAP Body	softwareVersion	M
SOAP Body	agentTAIN	O
SOAP Body	batchNumber	O

Table 11:Parameters for SOAP request of AEPN download API.

3.1.4.2 Sample Request

```
<soap:Envelope xmlns:soap="http://www.w3.org/2003/05/soap-envelope"
  xmlns:aep="http://aepnfetch.dto.ws.payroll.b2b.dsp.com">
  <soap:Header>
```

```

<wsse:Security xmlns:wsse="http://docs.oasis-open.org/wss/2004/01/oasis-200401-wss-wssecurity-secext-1.0.xsd"
xmlns:wsu="http://docs.oasis-open.org/wss/2004/01/oasis-200401-wss-wssecurity-utility-1.0.xsd">
<wsse:BinarySecurityToken EncodingType="http://docs.oasis-open.org/wss/2004/01/oasis-200401-wss-soap-message-
security-1.0#Base64Binary" ValueType="http://docs.oasis-open.org/wss/2004/01/oasis-200401-wss-x509-token-profile-
1.0#X509v3" wsu:Id="X509">MIIFejCCA2KgAwIBAgIUUY1...truncated</wsse:BinarySecurityToken><wsu:Timestamp
wsu:Id="timeStamp"><wsu:Created>2025-08-12T14:03:18.000Z</wsu:Created><wsu:Expires>2025-08-
12T15:33:18.000Z</wsu:Expires></wsu:Timestamp><ds:Signature
xmlns:ds="http://www.w3.org/2000/09/xmldsig#"><ds:SignedInfo><ds:CanonicalizationMethod
Algorithm="http://www.w3.org/2001/10/xml-exc-c14n#" /><ds:SignatureMethod
Algorithm="http://www.w3.org/2001/04/xmldsig-more#rsa-sha512" /><ds:Reference
URI="#messageBody"><ds:Transforms><ds:Transform Algorithm="http://www.w3.org/2001/10/xml-exc-
c14n#" /></ds:Transforms><ds:DigestMethod
Algorithm="http://www.w3.org/2001/04/xmldsig-more#sha512" /><ds:DigestValue>aGDMKFQmv/gK07dW5Ww9/sUPEGXt+5A1xI
7cc1z...truncated</ds:DigestValue></ds:Reference><ds:Reference URI="#timeStamp"><ds:Transforms><ds:Transform
Algorithm="http://www.w3.org/2001/10/xml-exc-c14n#" /></ds:Transforms><ds:DigestMethod
Algorithm="http://www.w3.org/2001/04/xmldsig-more#sha512" /><ds:DigestValue>wr0exgegPTYaCp2Rw0Cu8QbYwTjP2AA9s...
truncated</ds:DigestValue></ds:Reference></ds:SignedInfo><ds:SignatureValue>UMoalB/+VzvbhK/VcBkNq6liSxOygG8T4J
mv...truncated</ds:SignatureValue><ds:KeyInfo><wsse:SecurityTokenReference><wsse:Reference
URI="#X509" /></wsse:SecurityTokenReference></ds:KeyInfo></ds:Signature></wsse:Security>
</soap:Header>
<soap:Body xmlns:wsu="http://docs.oasis-open.org/wss/2004/01/oasis-200401-wss-wssecurity-utility-1.0.xsd"
wsu:Id="messageBody">
<aep:AepnFetchRequest>
<aep:employerReg>1234567T</aep:employerReg>
<aep:softwareUsed>Payroll Software</aep:softwareUsed> <aep:softwareVersion>1.2.2</aep:softwareVersion>
<!--Optional:-->
<aep:agentTAIN>999999A</aep:agentTAIN>
<!--Optional:-->
<aep:batchNumber>3</aep:batchNumber>
</aep:AepnFetchRequest>
</soap:Body>
</soap:Envelope>

```

3.1.4.3 Sample response

Success scenario.

```

<SOAP-ENV:Envelope xmlns:SOAP-ENV="http://www.w3.org/2003/05/soap-envelope" xmlns:wsu="http://docs.oasis-
open.org/wss/2004/01/oasis-200401-wss-wssecurity-utility-1.0.xsd">
<SOAP-ENV:Header/>
<SOAP-ENV:Body wsu:Id="messageBody">
<b2b:AepnFetchResponse xmlns:b2b="http://aepnfetch.dto.ws.payroll.b2b.dsp.com">
<b2b:inputFields>
<b2b:employerReg>1234567T</b2b:employerReg>
<b2b:softwareUsed>Payroll Software</b2b:softwareUsed>
<b2b:softwareVersion>1.2.2</b2b:softwareVersion>
<!--Optional: -->
<b2b:agentTAIN>999999A</b2b:agentTAIN>
</b2b:inputFields>
<b2b:data>
<b2b:requestType>aepnResponse</b2b:requestType>
<b2b:totalCount>24000</b2b:totalCount>
<b2b:batchNumber>1</b2b:batchNumber>
<b2b:maxBatchNumber>2</b2b:maxBatchNumber>
<b2b:aepnResponseBody>

```

```

        <b2b:aepnDataset>
          <b2b:entry>
            <b2b:employeePPSN>7001790JA</b2b:employeePPSN>
            <b2b:employmentID>923456E</b2b:employmentID>
            <b2b:employeeFirstName>Róisín</b2b:employeeFirstName>
            <b2b:employeeFamilyName>O'Donnell</b2b:employeeFamilyName>
            <b2b:enrolmentStatus>Active</b2b:enrolmentStatus>
            <b2b:aepnEnrolmentDate>2025-12-12</b2b:aepnEnrolmentDate>
            <b2b:aepnDownloadDateTime>2025-11-12
08:08:08</b2b:aepnDownloadDateTime>
            <b2b:aepnIssueDate>2025-12-12</b2b:aepnIssueDate>
            <b2b:aepnNumber>4</b2b:aepnNumber>
            <b2b:aepnChangeEvent>Enrolment</b2b:aepnChangeEvent>
            <b2b:erContributionRate>1.5</b2b:erContributionRate>
            <b2b:eeContributionRate>1.5</b2b:eeContributionRate>
          </b2b:entry>
        </b2b:aepnDataset>
      </b2b:aepnResponseBody>
    </b2b:data>
    <b2b:errors>
      <b2b:empty>true</b2b:empty>
      <b2b:errorDetails />
    </b2b:errors>
  </b2b:AepnFetchResponse> </SOAP-ENV:Body>
</SOAP-ENV:Envelope>

```

Error Scenario

```

<SOAP-ENV:Envelope xmlns:SOAP-ENV="http://www.w3.org/2003/05/soap-envelope" xmlns:wsu="http://docs.oasis-
open.org/wss/2004/01/oasis-200401-wss-wssecurity-utility-1.0.xsd">
  <SOAP-ENV:Header/>
  <SOAP-ENV:Body wsu:Id="messageBody">
    <b2b:AepnFetchResponse
      xmlns:b2b="http://aepnfetch.dto.ws.payroll.b2b.dsp.com">
      <b2b:inputFields>
        <b2b:employerReg>1234567T</b2b:employerReg>
        <b2b:softwareUsed>Payroll Software</b2b:softwareUsed>
        <b2b:softwareVersion>1.2.2</b2b:softwareVersion>
        <!--Optional: -->
        <b2b:agentTAIN>99999A</b2b:agentTAIN>
      </b2b:inputFields>
      <b2b:errors>
        <b2b:empty>false</b2b:empty>
        <b2b:errorDetails>
          <b2b:error>
            <b2b:errorCode> MFFINTERR0004</b2b:errorCode>
            <b2b:message> Invalid employerReg.</b2b:message>
          </b2b:error>
        </b2b:errorDetails>
      </b2b:errors>
    </b2b:AepnFetchResponse>
  </SOAP-ENV:Body>
</SOAP-ENV:Envelope>

```

3.2 Upload the contributions

Attribute	Value
URI for REST	/payrollapi/v1/contributions/updatecontributions/{taxyear}/{employerReg}/{payrollRunReference}/{submissionID}
URI for SOAP	/payrollapi/v2/contributions/updatecontributions
Supported methods	POST
Description	This service is used to upload the employer and employee contributions
Input Media type (MIME)	application/soap+xml, application/json
Status code for successful response	200
Response	As detailed in Section 3.1.1.1
Output Media type	application/soap+xml,application/json

Table 12:Attributes of contribution submission API

3.2.1 Request input fields

3.2.1.1 Headers fields

Field Name	Field Description	Mandatory	Example
Accept	Indicates the media types the client can handle	M	application/json
Content-Type	Indicates the media types the client can handle	M	application/json
Cache-Control	Specifies caching directives for the client (e.g., no-cache, max-age=3600).	M	no-cache
X-trace-id	Used for end-to-end tracing. UUID to be generated by payroll software for the request. Regex: <code>^[0-9a-fA-F]{8}-[0-9a-fA-F]{4}-[1-5][0-9a-fA-F]{3}-[89abAB][0-9a-fA-F]{3}-[0-9a-fA-F]{12}\$</code>	M	550e8400-e29b-41d4-a716-446655440000
Date/X-Date	Date & time of creation of the request. Date or X-Date can be used as the field name.	M	2018-01-01T12:00:00.000Z
Host	Hostname of the service being called. This would be a fixed value for different environments. EXT: b2b.myfuturefund-nonprod.ie	M	b2b.myfuturefund-nonprod.ie
Signature	Digital signature generated using the private key of the ROS certificate. Should consist of keyId, algorithm, headers and signature. This is identical to the field expected by Revenue	M	Signature::keyId="MIIFejC..truncated", algorithm="rsa-sha512", headers="(request-target) host date",signature="dFQv2+Rsh2..truncated"
Digest	Digest of the payload as this is a post method. This is to be created as per the existing specifications of Revenue.	M	gy94Z8mSYUjr/rL6qrLX... truncated
taxYear	Tax year for which the data is being submitted in the form YYYY	M	2025
employerReg	Employer registration number for which the data is to be submitted.	M	1234567T
payrollRunReference	This is an internally generated number by the client payroll software to uniquely identify the payroll run. This will be stored as a string.	M	Week_01
submissionID	Used for batching. Each submission can have only 12,000 records. Each submission should have a unique number.	M	Week_01_02

Field Name	Field Description	Mandatory	Example
softwareUsed	Name of payroll software used for calling the API. This will be used for helpdesk purposes.	M	Payroll Software
softwareVersion	Version of payroll software used for calling the API. This will be used for helpdesk purposes.	M	1.2.2
agentTAIN	Tax Advisor Identification Number. Required if request submission is done by agent on behalf of employer using ROS agent certs.	O	99999A
fileDate	Date when the data was generated, in the format YYYY-MM-DD	O	2025-10-12

Table 13:Header parameters for contribution submission

3.2.1.2 Data items

Field Name	Field Description	Repeats	Mandatory	Example
requestType	Structural element of the request. Always equal to "submission"	N	M	submission
taxYear	Tax year for which the data is being submitted in the form YYYY	N	M	2025
employerReg	Employer registration number for which the data is to be submitted.	N	M	1234567T
payrollRunReference	This is an internally generated number by the client payroll software to uniquely identify the payroll run. This will be stored as a string.	N	M	Week_01
submissionID	Used for batching. Each submission can have only 12,000 records. Each submission should have a unique number.	N	M	Week_01_02
softwareUsed	Name of payroll software used for calling the API. This will be used for helpdesk purposes.	N	M	Payroll Software
softwareVersion	Version of payroll software used for calling the API. This will be used for helpdesk purposes.	N	M	1.2.2
agentTAIN	Tax Advisor Identification Number. Required if request submission is done by agent on behalf of employer using ROS agent certs.	N	O	99999A
fileDate	Date when the data was generated, in the format YYYY-MM-DD	N	O	2025-10-12
contributionRequestBody	Structural element of the request		M	
contributionDataset	Structural element of the request		O	
lineItemID	Unique identifier for every line of submission. Should not repeat.	Y	M	Week_01_02_100
previousLineItemID	The lineItemID for which the correction is being done for this specific payroll run reference, in any submission	Y	O	Week_01_01_100
employeePPSN	PPSN of employee	Y	M	7001790JA
employmentID	Company given unique employee ID	Y	M	923456E
employeeFirstName	Given first name of employee	Y	M	Róisín
employeeFamilyName	Given family name of employee	Y	M	O'Donnell
aepnNumber	AEPN number of the employee as given by the AEPN download API for the employee. The AEPN number for the aepnDownloadDateTime is matched against this input. If they do not match a warning is sent back, and	Y	M	4

Field Name	Field Description	Repeats	Mandatory	Example
aeprDownloadDateTime	the incoming contribution will be processed. Date time stamp when the AEPR for the employee was downloaded. This value is per employee. Dates can vary across a contribution submission. AEPR numbers are matched for this given date.	Y	M	2025-11-12 08:08:08
payDate	Pay date should be the date on which employee's wages are in their bank. Contributions can be processed on this date. Can be in the future and in the past. Past pay date will initiate immediate collection.	Y	M	2025-12-12
frequency	The frequency of the contributions. Allowed values are <ul style="list-style-type: none"> • Weekly • Fortnightly • Monthly • Four-Weekly • Twice-Monthly • Quarterly • Bi-Annual • Week-based Monthly • Annual • Other . No validations will be done on the same and all incoming data will be processed.	Y	M	Monthly
grossPay	Pay in EUR of the employee. Supports 2 places of decimal. This is the Revenue gross pay.	Y	M	1500.00
erContribution	The employer contribution amount.	Y	M	22.50
eeContribution	The employee contribution amount.	Y	M	22.50
payReason	The following reasons are accepted and are to be used as applicable. The code needs to be submitted Insufficient Nett Pay (Code: INPA) Pay Adjustment (Code: PAADJ) Removal of employment Exit Date (Code: ROEED)	Y	O	PAADJ
linktaxYear	This field should be sent when the payReason code is PAADJ and an adjustment is being made for an earlier contribution which was less due to Insufficient Nett Pay and INPA was the payReason in that submission. Tax year of the previous submission with payReason INPA against which the adjustment is being done.	Y	O	2025
linkpayrollRunReference	This field should be sent when the payReason code is PAADJ and an adjustment is being made for an earlier contribution which was less due to Insufficient Nett Pay and INPA was the payReason in that submission. Payroll run reference of the previous submission with payReason INPA against which the adjustment is being done.	Y	O	Week_01

Field Name	Field Description	Repeats	Mandatory	Example
linklineItemID	This field should be sent when the payReason code is PAADJ and an adjustment is being made for an earlier contribution which was less due to Insufficient Nett Pay and INPA was the payReason in that submission. lineitemID of the previous submission with payReason INPA against which the adjustment is being done.	Y	O	Week_01_02_100
exitDate	<p>If employee has resigned, then the date of exit is to be sent here.</p> <p>The exit date provided can be in the future or in the past. If a past date is sent, then the exit date will be set to the current business date. Future date will be effective from the given date only.</p> <p>System will initiate an AEPN change on the given exit date. The AEPN will be locked at the prevailing rate and left active for 12 months. Refer to this section for additional details.</p> <p>If multiple exit dates are provided for a single PPSN in the same submission with different lineitemIDs then both will be errored out and not processed.</p> <p>Exit dates can be changed or removed. Refer to this section for additional details.</p>	Y	O	2025-12-12
lineItemIDsToDelete	This is an array of lineItemIDs to be deleted from the previous submissions for a specific payroll run reference. This would be a separate request component. See sample below.	N	O	["Mon_01_02_100", "Mon_01_02_101", "Mon_01_03_101"]

Table 14: Input data item fields for contribution submission

3.2.2 Response output fields

Success scenario

3.2.2.1 Headers

Field Name	Field Description	Example
Accept	Media type of the response	application/json
Content-Type	Media type of the response	application/json
Cache-Control	Specifies caching directives for the client. This will always be set to no-cache	no-cache
Status-code	http status code	200 for success
X-trace-id	Used for end-to-end tracing. UUID which was sent as part of the request.	550e8400-e29b-41d4-a716-446655440000

Table 15: Response headers of the upload contributions API

3.2.2.2 Output field structures

Two fields are part of the response as below.

Field Name	Field Description	Repeats	Example
fileAcknowledged	Possible values are true and false. Business validations will not contribute to a false response. The initial response will be true and business validation errors will have to be fetched via the error API.		TRUE
acknowledgementNumber	TCS BaNCS generated number for reference and tracking within TCS BaNCS and for any queries and support.		GUID91821

Table 16:Output field structure of contribution submission API

3.2.3 JSON Sample

3.2.3.1 Request structure

URL structure:

<https://<b2b.domainName>/payrollapi/v1/contributions/updatecontributions/{taxyear}/{employerReg}/{payrollRunReference}/{submissionID}>

Input type	Field Name	Mandatory
Http header	Accept	M
Http header	Content-Type	M
Http header	Cache-Control	M
Http header	X-trace-id	M
Http header	Date/X-Date	M
Http header	Host	M
Http header	Signature	M
Http header	Digest	M
Path param	taxYear	M
Path param	employerReg	M
Path param	payrollRunReference	M
Path param	submissionID	M
Query Param	softwareUsed	M
Query Param	softwareVersion	M
Query Param	agentTAIN	O
Query Param	fileDate	O

Table 17:Parameters for REST request of contributions submission API.

All data items have to be sent as part of the request body.

3.2.3.2 Sample Request

Upload Contributions Scenario

URI : /payrollapi/v1/contributions/updatecontributions/2025/1234567T/Week_01/Week_01_02

Request Headers :

Http header Accept application/json
 Http header Content-Type application/json; charset=UTF-8
 Http header Cache-Control no-cache
 Http header X-trace-id 550e8400-e29b-41d4-a716-446655440000
 Http header Date/X-Date 2018-01-01T12:00:00.000Z
 Http header Host b2b.myfuturefund-nonprod.ie
 Http header Signature Signature::keyId="MIIFejC..truncated",algorithm="rsa-sha512",headers="request-target date host digest",signature="dFQv2+RsH2..truncated"

Path Parameters :

taxYear - 2025

employerReg - "1234567T"
payrollRunReference - "Week_01"
submissionID - "Week_01_02"

Query parameters :

softwareUsed - "Payroll_Software"
softwareVersion - "1.2.2"
agentTAIN - "99999A"
fileDate - "2025-10-12"

headers & Signing string :

headers="(request-target) date host digest"

(request-target): post

/payrollapi/v1/contributions/updatecontributions/2025/1234567T/Week_01/Week_01_02?softwareUsed=Payroll_Software&softwareVersion=1.2.2&agentTAIN=99999A&fileDate=2025-10-12

date: 2018-01-01T12:00:00.000Z

host: b2b.myfuturefund-nonprod.ie

digest: gy94Z8mSYUjr/rL6qrLX... truncated

Please note the order of the query parameters in the signing string.

This sample is for the given headers. It will vary for a different choice of headers.

Request Body :

```
{
  "data":{
    "requestType":"submission",
    "taxYear":2025,
    "employerReg":"1234567T",
    "payrollRunReference":"Week_01",
    "submissionID":"Week_01_02",
    "softwareUsed":"Payroll Software",
    "softwareVersion":"1.2.2",
    "agentTAIN":"99999A",
    "fileDate":"2025-12-12",
    "contributionRequestBody":{
      "contributionDataset":[
        //Example of correction
        {
          "lineItemID":"Week_01_02_100",
          "previousLineItemID":"Week_01_01_100",
          "employeePPSN":"7001790JA",
          "employmentID":"923456E",
          "employeeFirstName":"Róisín",
          "employeeFamilyName":"O'Donnell",
          "aepnNumber":4,
          "aepnDownloadDateTime":"2025-11-12 08:08:08",
          "payDate":"2025-12-12",
          "frequency":"Monthly",
          "grossPay":1500.00,
          "erContribution":22.50,
          "eeContribution":22.50
        }
      ],
    }
  }
}
```

```

//Example of new payment
{
    "lineItemID":"Week_01_02_101",
    "employeePPSN":"7431790JA",
    "employmentID":"923457E",
    "employeeFirstName":"John",
    "employeeFamilyName":"Doe",
    "aepnNumber":3,
    "aepnDownloadDateTime":"2025-11-12 08:08:08",
    "payDate":"2025-12-12",
    "frequency":"Monthly",
    "grossPay":1500.00,
    "erContribution":22.50,
    "eeContribution":22.50
},
//Example of insufficient nett pay (equal to zero) and zero contribution
{
    "lineItemID":"Week_01_02_102",
    "employeePPSN":"7400090JA",
    "employmentID":"923459E",
    "employeeFirstName":"Jane",
    "employeeFamilyName":"Doe",
    "aepnNumber":3,
    "aepnDownloadDateTime":"2025-11-12 08:08:08",
    "payDate":"2025-12-12",
    "frequency":"Monthly",
    "grossPay":1500.00,
    "erContribution":22.50,
    "eeContribution":0.00,
    "payReason":"INPA",
},
//Example of adjustment amount with linking to previous line item
{
    "lineItemID":"Week_01_02_103",
    "employeePPSN":"7501790JA",
    "employmentID":"923458E",
    "employeeFirstName":"Jack",
    "employeeFamilyName":"Smith",
    "aepnNumber":1,
    "aepnDownloadDateTime":"2025-11-12 08:08:08",
    "payDate":"2025-12-12",
    "frequency":"Monthly",
    "grossPay":1500.00,
    "erContribution":22.50,
    "eeContribution":43.00,
    "payReason":"PAADJ",
    "linktaxYear":2025,
    "linkpayrollRunReference":"previous_month_01",
    "linklineItemID":"previous_month_01_123"
}
],
//Example of deletion
"lineItemIDsToDelete":[
    "Mon_01_02_100",
    "Mon_01_02_101",

```

```

                "Mon_01_03_101"
            ]
        }
    }
}

```

3.2.3.3 Sample response

Success scenario

```

{
  "inputFields": {
    "taxYear": 2025,
    "employerReg": "1234567T",
    "payrollRunReference": "Week_01",
    "submissionID": "Week_01_02",
    "softwareUsed": "Payroll Software",
    "softwareVersion": "1.2.2",
    "agentTAIN": "99999A",
    "fileDate": "2025-12-12"
  },
  "data": {
    "fileAcknowledged": true,
    "acknowledgementNumber": "GUID91821"
  },
  "errors": {
    "empty": true,
    "errorDetails": [
      {
        "errorCode": "",
        "message": ""
      }
    ]
  }
}

```

Error Scenario: Invalid employerNo.

```

{
  "inputFields": {
    "taxYear": 2025,
    "employerReg": "1234567T",
    "payrollRunReference": "Week_01",
    "submissionID": "Week_01_02",
    "softwareUsed": "Payroll Software",
    "softwareVersion": "1.2.2",
    "agentTAIN": "99999A",
    "fileDate": "2025-12-12"
  },
  "data": {
    "fileAcknowledged": false,
    "acknowledgementNumber": "NA"
  },
  "errors": {
    "empty": false,
    "errorDetails": [
      {

```

```

    "errorCode": " MFFINTERR0004",
    "message": " Invalid employerReg."
  }
]
}
}

```

3.2.4 SOAP Sample

3.2.4.1 Request structure

URL structure: <https://<b2b.domainName>/payrollapi/v2/contributions/updatecontributions>

Input type	Field Name	Mandatory
Http header	Accept	M
Http header	Content-Type	M
Http header	Cache-Control	M
Http header	X-trace-id	M
SOAP Header	SOAP Header	M
SOAP Body	taxYear	M
SOAP Body	employerReg	M
SOAP Body	payrollRunReference	M
SOAP Body	submissionID	M
SOAP Body	softwareUsed	M
SOAP Body	softwareVersion	M
SOAP Body	agentTAIN	O
SOAP Body	fileDate	O

Table 18:Parameters for SOAP request of contribution submission API.

3.2.1.4 Sample Request

```

<soapenv:Envelope xmlns:soapenv="http://www.w3.org/2003/05/soap-envelope"
xmlns:upl="http://uploadrequest.dto.ws.payroll.b2b.dsp.com">
  soapenv:Header<wsse:Security
xmlns:wsse="http://docs.oasis-open.org/wss/2004/01/oasis-200401-wss-wssecurity-secext-1.0.xsd"
xmlns:wsu="http://docs.oasis-open.org/wss/2004/01/oasis-200401-wss-wssecurity-utility-
1.0.xsd"><wsse:BinarySecurityToken EncodingType="http://docs.oasis-open.org/wss/2004/01/oasis-200401-wss-soap-
message-security-1.0#Base64Binary" ValueType="http://docs.oasis-open.org/wss/2004/01/oasis-200401-wss-x509-token-
profile-1.0#X509v3" wsu:Id="X509">MIIFejCCA2KgAwIbAgIUG6Egl958J+w3hYbtPc+wLzzFo+...truncated<wsu:Timestamp
wsu:Id="timeStamp">wsu:Created2025-08-12T14:05:36.000Zwsu:Expires2025-08-12T15:35:36.000Z<ds:Signature
xmlns:ds="http://www.w3.org/2000/09/xmldsig#">ds:SignedInfo<ds:CanonicalizationMethod
Algorithm="http://www.w3.org/2001/10/xml-exc-c14n#" /><ds:SignatureMethod
Algorithm="http://www.w3.org/2001/04/xmldsig-more#rsa-sha512" /><ds:Reference
URI="#messageBody">ds:Transforms<ds:Transform Algorithm="http://www.w3.org/2001/10/xml-exc-
c14n#" /><ds:DigestMethod
Algorithm="http://www.w3.org/2001/04/xmllenc#sha512" />ds:DigestValueIkpRdKkgPqf+9EnKx3K348os4ePldTbhkTXtcG4g
jUeu...truncated<ds:Reference URI="#timeStamp">ds:Transforms<ds:Transform
Algorithm="http://www.w3.org/2001/10/xml-exc-c14n#" /><ds:DigestMethod
Algorithm="http://www.w3.org/2001/04/xmllenc#sha512" />ds:DigestValueLo62QQEDsm77yXmsz5lqV2lxxqL...truncatedds
:SignatureValueUSFYEWdUPEiEFf9F1Qr7AFDXUbelufDyUGalJwg...truncatedds:KeyInfowsse:SecurityTokenReference<wsse:
Reference URI="#X509" />
  <soapenv:Body xmlns:wsu="http://docs.oasis-open.org/wss/2004/01/oasis-200401-wss-
wssecurity-utility-1.0.xsd" wsu:Id="messageBody">
    <upl:ContributionSubmissionRequest>
      <upl:taxYear>2026</upl:taxYear>
      <upl:employerReg>1234567T</upl:employerReg>
      <upl:payrollRunReference>Week_01</upl:payrollRunReference>
      <upl:submissionID>Week_01_02</upl:submissionID>
    </upl:ContributionSubmissionRequest>
  </soapenv:Body>
</soapenv:Envelope>

```

```

<upl:softwareUsed>Payroll Software</upl:softwareUsed>
<upl:softwareVersion>1.2.2</upl:softwareVersion>
<!--Optional:-->
<upl:agentTAIN>99999A</upl:agentTAIN>
<!--Optional:-->
<upl:fileDate>2025-12-12</upl:fileDate>
<upl:data>
  <upl:requestType>submission</upl:requestType>
  <upl:contributionRequestBody>
    <upl:contributionDataset>
      <upl:entry>
        <upl:lineItemID>Week_01_02_100</upl:lineItemID>
        <upl:previousLineItemID>Week_01_01_100</upl:previousLineItemID>
        <upl:employeePPSN>7001790JA</upl:employeePPSN>
        <upl:employmentID>923456E</upl:employmentID>
        <upl:employeeFirstName>Róisín</upl:employeeFirstName>
        <upl:employeeFamilyName>O'Donnell</upl:employeeFamilyName>
        <upl:aepnNumber>4</upl:aepnNumber>
        <upl:aepnDownloadDateTime>2025-11-12 08:08:08</upl:aepnDownloadDateTime>
        <upl:payDate>2025-12-12</upl:payDate>
        <upl:frequency>Monthly</upl:frequency>
        <upl:grossPay>1500.00</upl:grossPay>
        <upl:erContribution>22.50</upl:erContribution>
        <upl:eeContribution>22.50</upl:eeContribution>
      </upl:entry>
      <upl:entry>
        <upl:lineItemID>Week_01_02_101</upl:lineItemID>
        <upl:employeePPSN>7431790JA</upl:employeePPSN>
        <upl:employmentID>923457E</upl:employmentID>
        <upl:employeeFirstName>John</upl:employeeFirstName>
        <upl:employeeFamilyName>Doe</upl:employeeFamilyName>
        <upl:aepnNumber>1</upl:aepnNumber>
        <upl:aepnDownloadDateTime>2025-11-12 08:08:08</upl:aepnDownloadDateTime>
        <upl:payDate>2025-12-12</upl:payDate>
        <upl:frequency>Monthly</upl:frequency>
        <upl:grossPay>1500.00</upl:grossPay>
        <upl:erContribution>22.50</upl:erContribution>
        <upl:eeContribution>22.50</upl:eeContribution>
      </upl:entry>
      <upl:entry>
        <upl:lineItemID>Week_01_02_102</upl:lineItemID>
        <upl:employeePPSN>7400090JA</upl:employeePPSN>
        <upl:employmentID>923459E</upl:employmentID>
        <upl:employeeFirstName>Jane</upl:employeeFirstName>
        <upl:employeeFamilyName>Doe</upl:employeeFamilyName>
        <upl:aepnNumber>1</upl:aepnNumber>
        <upl:aepnDownloadDateTime>2025-11-12 08:08:08</upl:aepnDownloadDateTime>
        <upl:payDate>2025-12-12</upl:payDate>
        <upl:frequency>Monthly</upl:frequency>
        <upl:grossPay>1500.00</upl:grossPay>
        <upl:erContribution>22.50</upl:erContribution>
        <upl:eeContribution>0.00</upl:eeContribution>
        <upl:payReason>INPA</upl:payReason>
      </upl:entry>
    </upl:contributionDataset>
  </upl:contributionRequestBody>
</upl:data>

```

```

<upl:lineItemID>Week_01_02_103</upl:lineItemID>
<upl:employeePPSN>7501790JA</upl:employeePPSN>
<upl:employmentID>923458E</upl:employmentID>
<upl:employeeFirstName>Jack</upl:employeeFirstName>
<upl:employeeFamilyName>Smith</upl:employeeFamilyName>
<upl:aepnNumber>1</upl:aepnNumber>
<upl:aepnDownloadDateTime>2025-11-12 08:08:08</upl:aepnDownloadDateTime>
<upl:payDate>2025-12-12</upl:payDate>
<upl:frequency>Monthly</upl:frequency>
<upl:grossPay>1500.00</upl:grossPay>
<upl:erContribution>22.50</upl:erContribution>
<upl:eeContribution>43.00</upl:eeContribution>
<upl:payReason>PAADJ</upl:payReason>
<upl:linktaxYear>2025</upl:linktaxYear>
<upl:linkpayrollRunReference>previous_month_01</upl:linkpayrollRunReference>
<upl:linklineItemID>previous_month_01_123</upl:linklineItemID>
</upl:entry>
</upl:contributionDataset>
<upl:lineItemIDsToDelete>
  <upl:item>Mon_01_02_100</upl:item>
  <upl:item>Mon_01_02_101</upl:item>
  <upl:item>Mon_01_03_101</upl:item>
</upl:lineItemIDsToDelete>
</upl:contributionRequestBody>
</upl:data>
</upl:ContributionSubmissionRequest>

```

3.2.4.2 Sample response

Success scenario

```

<SOAP-ENV:Envelope xmlns:SOAP-ENV="http://www.w3.org/2003/05/soap-envelope" xmlns:wsu="http://docs.oasis-open.org/wss/2004/01/oasis-200401-wss-wssecurity-utility-1.0.xsd">
  <SOAP-ENV:Header/>
  <SOAP-ENV:Body wsu:Id="messageBody">
    <b2b:contributionSubmissionResponse
      xmlns:b2b="http://uploadresponse.dto.ws.payroll.b2b.dsp.com">
      <b2b:inputFields>
        <b2b:taxYear>2025</b2b:taxYear>
        <b2b:employerReg>1234567T</b2b:employerReg>
        <b2b:payrollRunReference>Week_01</b2b:payrollRunReference>
        <b2b:submissionID>Week_01_02</b2b:submissionID>
        <b2b:softwareUsed>Payroll Software</b2b:softwareUsed>
        <b2b:softwareVersion>1.2.2</b2b:softwareVersion>
        <!--Optional: -->
        <b2b:agentTAIN>99999A</b2b:agentTAIN>
        <!--Optional: -->
        <b2b:fileDate>2025-12-12</b2b:fileDate>
      </b2b:inputFields>
      <b2b:data>
        <b2b:fileAcknowledged>true</b2b:fileAcknowledged>
        <b2b:acknowledgementNumber>GUID91821</b2b:acknowledgementNumber>
      </b2b:data>
      <b2b:errors>
        <b2b:empty>true</b2b:empty>
        <b2b:errorDetails />
      </b2b:errors>
    </b2b:contributionSubmissionResponse>
  </SOAP-ENV:Body>
</SOAP-ENV:Envelope>

```

```

    </b2b:errors>
</b2b:contributionSubmissionResponse> </SOAP-ENV:Body>
</SOAP-ENV:Envelope>

```

Error Scenario:

```

<SOAP-ENV:Envelope xmlns:SOAP-ENV="http://www.w3.org/2003/05/soap-envelope" xmlns:wsu="http://docs.oasis-
open.org/wss/2004/01/oasis-200401-wss-wssecurity-utility-1.0.xsd">
  <SOAP-ENV:Header/>
  <SOAP-ENV:Body wsu:Id="messageBody">
<b2b:contributionSubmissionResponse
  xmlns:b2b="http://uploadresponse.dto.ws.payroll.b2b.dsp.com">
  <b2b:inputFields>
    <b2b:taxYear>2025</b2b:taxYear>
    <b2b:employerReg>1234567T</b2b:employerReg>
    <b2b:payrollRunReference>Week_01</b2b:payrollRunReference>
    <b2b:submissionID>Week_01_02</b2b:submissionID>
    <b2b:softwareUsed>Payroll Software</b2b:softwareUsed>
    <b2b:softwareVersion>1.2.2</b2b:softwareVersion>
    <!--Optional: -->
    <b2b:agentTAIN>99999A</b2b:agentTAIN>
    <!--Optional: -->
    <b2b:fileDate>2025-12-12</b2b:fileDate>
  </b2b:inputFields>
  <b2b:errors>
    <b2b:empty>>false</b2b:empty>
    <b2b:errorDetails>
      <b2b:error>
        <b2b:errorCode>MFFINTERR0008</b2b:errorCode>
        <b2b:message> The number of records included in a contribution upload must fall
within the range of 1 to 12,000</b2b:message>
      </b2b:error>
    </b2b:errorDetails>
  </b2b:errors>
</b2b:contributionSubmissionResponse> </SOAP-ENV:Body>
</SOAP-ENV:Envelope>

```

3.3 Retrieve submitted contribution status

Attribute	Value
URI REST	/payrollapi/v1/contributions/checkstatus/{taxYear}/{employerReg}/{payrollRunReference}/{submissionID}
URI SOAP	/payrollapi/v2/contributions/checkstatus
Supported methods	GET
Description	This Service is used to retrieve the status of the submitted contributions
Input Media type (MIME)	application/soap+xml, application/json
Status code for successful response	200
Response	As detailed below
Output Media type	application/soap+xml, application/json

Table 19:Attributes of contribution status API

3.3.1 Request input fields

3.3.1.1 Headers

Field Name	Field Description	Mandatory	Example
Accept	Indicates the media types the client can handle	M	application/json
Content-Type	Indicates the media types the client can handle	M	application/json
Cache-Control	Specifies caching directives for the client (e.g., no-cache, max-age=3600).	M	no-cache
X-trace-id	Used for end-to-end tracing. UUID to be generated by payroll software for the request. Regex: <code>^[0-9a-fA-F]{8}-[0-9a-fA-F]{4}-[1-5][0-9a-fA-F]{3}-[89abAB][0-9a-fA-F]{3}-[0-9a-fA-F]{12}\$</code>	M	550e8400-e29b-41d4-a716-446655440000
Date/X-Date	Date & time of creation of the request. Date or X-Date can be used as the field name.	M	2018-01-01T12:00:00.000Z
Host	Hostname of the service being called. This would be a fixed value for different environments. EXT: b2b.myfuturefund-nonprod.ie	M	b2b.myfuturefund-nonprod.ie
Signature	Digital signature generated using the private key of the ROS certificate. Should consist of keyId, algorithm, headers and signature. This is identical to the field expected by Revenue	M	Signature::keyId="MIIFejC..truncated", algorithm="rsa-sha512", headers="(request-target) host date",signature="dFQv2+RsH2..truncated"
taxYear	Should be the same as the tax year for the submitted contribution.	M	2025
employerReg	Should be the same as the employer registration number submitted for the contribution.	M	1234567T
payrollRunReference	Should be the same as the payroll run reference submitted for the contribution.	M	Week_01
submissionID	Should be the same as the submission ID submitted for the contribution.	M	Week_01_02
softwareUsed	Name of payroll software used for calling the API. This will be used for helpdesk purposes.	M	Payroll Software
softwareVersion	Version of payroll software used for calling the API. This will be used for helpdesk purposes.	M	1.2.2
agentTAIN	Tax Advisor Identification Number. Required if request submission is done by agent on behalf of employer using ROS agent certs.	O	99999A

Table 20:Request headers of contribution status API

3.3.2 Response output fields

3.3.2.1 Headers

Field Name	Field Description	Example
Accept	Media type of the response	application/json
Content-Type	Media type of the response	application/json
Cache-Control	Specifies caching directives for the client. This will always be set to no-cache	no-cache
Status-code	http status code	200 for success
X-trace-id	Used for end-to-end tracing. UUID which was sent as part of the request.	550e8400-e29b-41d4-a716-446655440000

Table 21:Response headers of contribution status API

3.3.2.2 Data items

The following fields will be returned as part of the response.

Field name	Description	Repeats	Sample Value
contributionUploadStatus	Possible Values <ul style="list-style-type: none"> No Data Found Success In-Progress Error Success with warnings Partial success with errors Partial success with errors and warnings <p>In case of Error and Success with warnings the contribution error API is to be called to fetch the list of errors and warnings.</p>	N	Success

Table 22:Response structure of contribution status API.

3.3.3 JSON Sample

3.3.3.1 Request structure

URL structure:

<https://<b2b.domainName>/payrollapi/v1/contributions/checkstatus/{taxYear}/{employerReg}/{payrollRunReference}/{submissionID}>

Input type	Field Name	Mandatory
Http header	Accept	M
Http header	Content-Type	M
Http header	Cache-Control	M
Http header	X-trace-id	M
Http header	Date/X-Date	M
Http header	Host	M
Http header	Signature	M
Path param	taxYear	M
Path param	employerReg	M
Path param	payrollRunReference	M
Path param	submissionID	M
Query Param	softwareUsed	M
Query Param	softwareVersion	M
Query Param	agentTAIN	O

Table 23:Parameters for REST request of contribution status API.

3.2.1.4 Sample request

URI : /payrollapi/v1/contributions/checkstatus/2025/1234567T/Week_01/Week_01_02

Request Headers :

Http header Accept application/json
 Http header Content-Type application/json; charset=UTF-8
 Http header Cache-Control no-cache
 Http header X-trace-id 550e8400-e29b-41d4-a716-446655440000
 Http header Date/X-Date 2018-01-01T12:00:00.000Z
 Http header Host b2b.myfuturefund-nonprod.ie

Http header Signature Signature::keyId="MIIFejC..truncated",algorithm="rsa-sha512",headers="request-target date host",signature="dFQv2+RsH2..truncated"

Path Parameters :

taxYear - 2025
employerReg - "1234567T"
payrollRunReference - "Week_01"
submissionID - "Week_01_02"

Query parameters :

softwareUsed - "Payroll_Software"
softwareVersion - "1.2.2"
agentTAIN - "99999A"

headers & Signing string :

headers="(request-target) date host"

(request-target): get

/payrollapi/v1/contributions/checkstatus/2025/1234567T/Week_01/Week_01_02?softwareUsed=Payroll_Software&softwareVersion=1.2.2&agentTAIN=99999A

date: 2018-01-01T12:00:00.000Z

host: b2b.myfuturefund-nonprod.ie

Please note the order of the query parameters in the signing string.

This sample is for the given headers. It will vary for a different choice of headers.

3.3.3.2 Sample JSON response

Success scenario.

Response Headers :

Http header Accept application/json
Http header Content-Type application/json
Http header Cache-Control no-cache
Http header Status-code 200
Http header X-trace-id 550e8400-e29b-41d4-a716-446655440000

Response Body :

```
{
  "inputFields": {
    "taxYear": 2025,
    "employerReg": "1234567T",
    "payrollRunReference": "Week_01",
    "submissionID": "Week_01_02",
    "softwareUsed": "Payroll Software",
    "softwareVersion": "1.2.2",
    "agentTAIN": "99999A"
  },
  "data": {
    "contributionUploadStatus": "Success"
  },
  "errors": {
    "empty": true,
    "errorDetails": [
      {
        "errorCode": "",
        "message": ""
      }
    ]
  }
}
```

```
}
}
```

Error scenario.

Response Headers :

```
Http header    Accept    application/json
Http header    Content-Type  application/json
Http header    Cache-Control no-cache
Http header    Status-code  200
Http header    X-trace-id   550e8400-e29b-41d4-a716-446655440000
```

Response body:

```
{
  "inputFields": {
    "taxYear": 2025,
    "employerReg": "1234567T",
    "payrollRunReference": "Week_01",
    "submissionID": "Week_01_02",
    "softwareUsed": "Payroll Software",
    "softwareVersion": "1.2.2",
    "agentTAIN": "99999A"
  },
  "data": {
    "contributionUploadStatus": "No Data Found"
  },
  "errors": {
    "empty": false,
    "errorDetails": [
      {
        "errorCode": "MFFERR091",
        "message": "No Data Found with input parameters"
      }
    ]
  }
}
```

3.3.4 SOAP sample

3.3.4.1 Request structure

URL structure: <https://<b2b.domainName>/payrollapi/v2/contributions/checkstatus>

Input type	Field Name	Mandatory
Http header	Accept	M
Http header	Content-Type	M
Http header	Cache-Control	M
Http header	X-trace-id	M
SOAP Header	SOAP Header	M
SOAP Body	taxYear	M
SOAP Body	employerReg	M
SOAP Body	payrollRunReference	M
SOAP Body	submissionID	M
SOAP Body	softwareUsed	M
SOAP Body	softwareVersion	M
SOAP Body	agentTAIN	O

Table 24:Parameters for SOAP request of contribution status API.

3.2.1.4 Sample Request

```
<<soap:Envelope xmlns:soap="http://www.w3.org/2003/05/soap-envelope"
xmlns:con="http://contributionsubmissionstatus.dto.ws.payroll.b2b.dsp.com"> soap:Header<wsse:Security
xmlns:wsse="http://docs.oasis-open.org/wss/2004/01/oasis-200401-wss-wssecurity-secext-1.0.xsd"
xmlns:wsu="http://docs.oasis-open.org/wss/2004/01/oasis-200401-wss-wssecurity-utility-
1.0.xsd"><wsse:BinarySecurityToken EncodingType="http://docs.oasis-open.org/wss/2004/01/oasis-200401-wss-soap-
message-security-1.0#Base64Binary" ValueType="http://docs.oasis-open.org/wss/2004/01/oasis-200401-wss-x509-token-
profile-1.0#X509v3" wsu:Id="X509">MIIFejCCA2KgAwIBAgIUG6Egl958J+w3hYbtPc+wLzzFo+...truncated<wsu:Timestamp
wsu:Id="timeStamp">wsu:Created2025-08-12T14:04:29.000Zwsu:Expires2025-08-12T15:34:29.000Z<ds:Signature
xmlns:ds="http://www.w3.org/2000/09/xmldsig#">ds:SignedInfo<ds:CanonicalizationMethod
Algorithm="http://www.w3.org/2001/10/xml-exc-c14n#" /><ds:SignatureMethod
Algorithm="http://www.w3.org/2001/04/xmldsig-more#rsa-sha512" /><ds:Reference
URI="#messageBody">ds:Transforms<ds:Transform Algorithm="http://www.w3.org/2001/10/xml-exc-
c14n#" /><ds:DigestMethod
Algorithm="http://www.w3.org/2001/04/xmllenc#sha512" />ds:DigestValue7KSHiDwdpNa1EGCXo7uR72gN1fZJLD2kHZLin7
bOK...truncated<ds:Reference URI="#timeStamp">ds:Transforms<ds:Transform
Algorithm="http://www.w3.org/2001/10/xml-exc-c14n#" /><ds:DigestMethod
Algorithm="http://www.w3.org/2001/04/xmllenc#sha512" />ds:DigestValueC8fJwyaGYspGjYy3GjpdU+Bit8H5+UjziNBDJeCq
eT1VJ...truncatedds:SignatureValueB76vVMM+mmJkbBMZ+Tx5Dayvutm6rPOY3WuUq...truncatedds:KeyInfowsse:Security
TokenReference<wsse:Reference URI="#X509" /> <soap:Body xmlns:wsu="http://docs.oasis-open.org/wss/2004/01/oasis-
200401-wss-wssecurity-utility-1.0.xsd" wsu:Id="messageBody">
<con:ContributionSubmissionStatusRequest>
  <con:taxYear>2025</con:taxYear>
  <con:employerReg>1234567T</con:employerReg>
  <con:payrollRunReference>Week_01</con:payrollRunReference>
  <con:submissionID>Week_01_02</con:submissionID>
  <con:softwareUsed>Payroll Software</con:softwareUsed>
  <con:softwareVersion>1.2.2</con:softwareVersion>
  <!--Optional:-->
  <con:agentTAIN>99999A</con:agentTAIN>
</con:ContributionSubmissionStatusRequest>
```

3.3.4.2 Sample XML response

Success scenario:

```
<SOAP-ENV:Envelope xmlns:SOAP-ENV="http://www.w3.org/2003/05/soap-envelope" xmlns:wsu="http://docs.oasis-
open.org/wss/2004/01/oasis-200401-wss-wssecurity-utility-1.0.xsd">
  <SOAP-ENV:Header/>
  <SOAP-ENV:Body wsu:Id="messageBody">
<ns2:ContributionSubmissionStatusResponse
  xmlns:ns2="http://contributionsubmissionstatus.dto.ws.payroll.b2b.dsp.com">
  <ns2:inputFields>
    <ns2:taxYear>2025</ns2:taxYear>
    <ns2:employerReg>1234567T</ns2:employerReg>
    <ns2:payrollRunReference>Week_01</ns2:payrollRunReference>
    <ns2:submissionID>Week_01_02</ns2:submissionID>
    <ns2:softwareUsed>Payroll Software</ns2:softwareUsed>
    <ns2:softwareVersion>1.2.2</ns2:softwareVersion>
    <!--Optional: -->
    <ns2:agentTAIN>99999A</ns2:agentTAIN>
  </ns2:inputFields>
  <ns2:data>
    <ns2:contributionUploadStatus>Success</ns2:contributionUploadStatus>
```

```

    </ns2:data>
    <ns2:errors>
      <ns2:empty>true</ns2:empty>
      <ns2:errorDetails />
    </ns2:errors>
  </ns2:ContributionSubmissionStatusResponse>
</SOAP-ENV:Body>
</SOAP-ENV:Envelope>

```

Error Scenario.

```

<SOAP-ENV:Envelope xmlns:SOAP-ENV="http://www.w3.org/2003/05/soap-envelope" xmlns:wsu="http://docs.oasis-open.org/wss/2004/01/oasis-200401-wss-wssecurity-utility-1.0.xsd">
  <SOAP-ENV:Header/>
  <SOAP-ENV:Body wsu:Id="messageBody">
    <ns2:ContributionSubmissionStatusResponse
      xmlns:ns2="http://contributionsubmissionstatus.dto.ws.payroll.b2b.dsp.com">
      <ns2:inputFields>
        <ns2:taxYear>2025</ns2:taxYear>
        <ns2:employerReg>1234567T</ns2:employerReg>
        <ns2:payrollRunReference>Week_01</ns2:payrollRunReference>
        <ns2:submissionID>Week_01_02</ns2:submissionID>
        <ns2:softwareUsed>Payroll Software</ns2:softwareUsed>
        <ns2:softwareVersion>1.2.2</ns2:softwareVersion>
        <!--Optional: -->
        <ns2:agentTAIN>99999A</ns2:agentTAIN>
      </ns2:inputFields>
      <ns2:errors>
        <ns2:empty>false</ns2:empty>
        <ns2:errorDetails>
          <ns2:error>
            <ns2:errorCode>MFFERR091</ns2:errorCode>
            <ns2:message>No Data Found with input parameters</ns2:message>
          </ns2:error>
        </ns2:errorDetails>
      </ns2:errors>
    </ns2:ContributionSubmissionStatusResponse>
  </SOAP-ENV:Body>
</SOAP-ENV:Envelope>

```

3.4 Contribution Error Details

Attribute	Value
URI REST	/payrollapi/v1/contributions/errordetails/{taxYear}/{employerReg}/{payrollRunReference}/{submissionID}
URI SOAP	/payrollapi/v2/contributions/errordetails
Supported methods	GET
Description	This service is used to retrieve the error details of a contribution file.
Input Media type (MIME)	application/soap+xml,application/json
Status code for successful response	200
Response	As detailed in Section 3.1.1.1
Output Media type	application/soap+xml, application/json

Table 25:Attributes of contribution errors API

3.4.1 Request input fields

3.4.1.1 Headers

Field Name	Field Description	Mandatory	Example
Accept	Indicates the media types the client can handle	M	application/json
Content-Type	Indicates the media types the client can handle	M	application/json
Cache-Control	Specifies caching directives for the client (e.g., no-cache, max-age=3600).	M	no-cache
X-trace-id	Used for end-to-end tracing. UUID to be generated by payroll software for the request. Regex: <code>^[0-9a-fA-F]{8}-[0-9a-fA-F]{4}-[1-5][0-9a-fA-F]{3}-[89abAB][0-9a-fA-F]{3}-[0-9a-fA-F]{12}\$</code>	M	550e8400-e29b-41d4-a716-446655440000
Date/X-Date	Date & time of creation of the request. Date or X-Date can be used as the field name.	M	2018-01-01T12:00:00.000Z
Host	Hostname of the service being called. This would be a fixed value for different environments.	M	b2b.myfuturefund-nonprod.ie
Signature	Digital signature generated using the private key of the ROS certificate. Should consist of keyId, algorithm, headers and signature. This is identical to the field expected by Revenue	M	Signature::keyId="MIIFejC..truncated", algorithm="rsa-sha512", headers="(request-target) host date",signature="dFQv2+Rsh2..truncated"
taxYear	Should be the same as the tax year for the submitted contribution.	M	2025
employerReg	Should be the same as the employer registration number submitted for the contribution.	M	1234567T
payrollRunReference	Should be the same as the payroll run reference submitted for the contribution.	M	Week_01
submissionID	Should be the same as the submission ID submitted for the contribution.	M	Week_01_02
softwareUsed	Name of payroll software used for calling the API. This will be used for helpdesk purposes.	M	Payroll Software
softwareVersion	Version of payroll software used for calling the API. This will be used for helpdesk purposes.	M	1.2.2
agentTAIN	Tax Advisor Identification Number. Required if request submission is done by agent on behalf of employer using ROS agent certs.	O	99999A

Table 26:Request headers of contribution error details API

3.4.2 Response output fields

3.4.2.1 Headers

Field Name	Field Description	Example
Accept	Media type of the response	application/json
Content-Type	Media type of the response	application/json
Cache-Control	Specifies caching directives for the client. This will always be set to no-cache	no-cache
Status-code	http status code	200 for success

X-trace-id	Used for end-to-end tracing. UUID which was sent as part of the request.	550e8400-e29b-41d4-a716-446655440000
------------	--	--------------------------------------

Table 27:Response headers of contribution error details API

3.4.2.2 Data items

The following fields will be returned.

Field Name	Field Description	Repeats	Example
contributionErrors	Employer level fields or overall contribution level data which has been submitted is erroneous and data cannot be processed. For example Employer registration number does not exist, or number of records is exceeding 12000. Consists of an error code and message.		
code	Error code	Y	MFFERR001
message	Error message	Y	Employer Registration Number did not match
contributionWarnings	Employer level fields or overall contribution level data which has been submitted is erroneous or some pre-requisites are missing, yet data can be processed.		
code	Warning code	Y	MFFWAR002
message	Warning message	Y	Sepa DD Mandate is not set up for the employer
recordErrors	Employee level data submitted is erroneous and cannot be processed further. Consists of an error code and message and line item ID to identify the record uniquely.		
code	Error code	Y	RFERR002
message	Error message	Y	Firstname is a mandatory field and must not be left blank
lineItemID	lineItemID with which the error is associated	Y	Week_01_02_100
recordWarnings	Employee level data submitted is erroneous and can be processed further with warnings. Consists of a warning code and message and line item ID to identify the record uniquely.		
code	Warning code	Y	
message	Warning message	Y	
lineItemID	lineItemID with which the warning is associated	Y	Week_01_02_100

Table 28:Response data items of contribution error details API.

3.4.3 JSON Sample

3.4.3.1 Request structure

URL:: <https://<b2b.domainName>/payrollapi/v1/contributions/errorDetails/{taxYear}/{employerReg}/{payrollRunReference}/{submissionID}>

Input type	Field Name	Mandatory
Http header	Accept	M
Http header	Content-Type	M
Http header	Cache-Control	M
Http header	X-trace-id	M
Http header	Date/X-Date	M
Http header	Host	M
Http header	Signature	M
Path param	taxYear	M
Path param	employerReg	M
Path param	payrollRunReference	M
Path param	submissionID	M
Query Param	softwareUsed	M

Input type	Field Name	Mandatory
Query Param	softwareVersion	M
Query Param	agentTAIN	O

Table 29:Parameters for REST request of contribution error details API.

3.4.3.2 Sample Request

URI : /payrollapi/v1/contributions/errordetails/2025/1234567T/Week_01/Week_01_02

Request Headers :

Http header Accept application/json
 Http header Content-Type application/json; charset=UTF-8
 Http header Cache-Control no-cache
 Http header X-trace-id 550e8400-e29b-41d4-a716-446655440000
 Http header Date/X-Date 2018-01-01T12:00:00.000Z
 Http header Host b2b.myfuturefund-nonprod.ie
 Http header Signature Signature::keyId="MIIFejC..truncated",algorithm="rsa-sha512",headers="request-target date host",signature="dFQv2+RsH2..truncated"

Path Parameters :

taxYear - 2025
 employerReg - "1234567T"
 payrollRunReference - "Week_01"
 submissionID - "Week_01_02"

Query parameters :

softwareUsed - "Payroll_Software"
 softwareVersion - "1.2.2"
 agentTAIN - "99999A"

headers & Signing string :

headers="(request-target) date host"

(request-target): get

/payrollapi/v1/contributions/errordetails/2025/1234567T/Week_01/Week_01_02?softwareUsed=Payroll_Software&softwareVersion=1.2.2&agentTAIN=99999A
 date: 2018-01-01T12:00:00.000Z
 host: b2b.myfuturefund-nonprod.ie

Please note the order of the query parameters in the signing string.

This sample is for the given headers. It will vary for a different choice of headers.

3.4.3.3 Sample JSON response

Success scenario

Response Headers :

Http header Accept application/json
 Http header Content-Type application/json
 Http header Cache-Control no-cache
 Http header Status-code 200
 Http header X-trace-id 550e8400-f29b-41d4-a716-446655440000"

Response body :

```
{
  "inputFields": {
    "taxYear": 2025,
    "employerReg": "1234567T",
    "payrollRunReference": "Week_01",
```

```

        "submissionID": "Week_01_02",
        "softwareUsed": "Payroll Software",
        "softwareVersion": "1.2.2",
        "agentTAIN": "99999A"
    },
    "data": {
        "contributionErrors": [
            {
                "code": "MFFERR001",
                "message": "Incorrect Employer Reg ID."
            }
        ],
        "contributionWarnings": [],
        "recordErrors": [
            {
                "code": "MFFERR025",
                "message": "Gross Pay is missing.",
                "lineItemID": "Week_01_02_100"
            }
        ],
        "recordWarnings": [
            {
                "code": "MFFWAR002",
                "message": "AEPN not matched for the records available in the system.",
                "lineItemID": "Week_01_02_101"
            }
        ]
    },
    "errors": {
        "empty": true,
        "errorDetails": [
            {
                "errorCode": "",
                "message": ""
            }
        ]
    }
}

```

Error scenario.

Response Headers :

Http header	Accept	application/json
Http header	Content-Type	application/json
Http header	Cache-Control	no-cache
Http header	Status-code	200
Http header	X-trace-id	550e8400-e29b-41d4-a716-446655440000

Response body:

```

{
    "inputFields": {
        "taxYear": 2025,
        "employerReg": "1234567T",
        "payrollRunReference": "Week_01",
        "submissionID": "Week_01_02",
        "softwareUsed": "Payroll Software",
        "softwareVersion": "1.2.2",
        "agentTAIN": "99999A"
    },
    "data": {
        "contributionErrors": [],
        "contributionWarnings": [],

```

```

"recordErrors": [],
"recordWarnings": []
},
"errors": {
"empty": false,
"errorDetails": [
{
"errorCode": "MFFERRO91",
"message": "No Data Found with input parameters"
}
]
}
}
}

```

3.4.4 SOAP Sample

3.4.4.1 Request structure

URL:: <https://<b2b.domainName>/payrollapi/v2/contributions/errorDetails>

Input type / Response	Field Name	Mandatory
Http header	Accept	M
Http header	Content-Type	M
Http header	Cache-Control	M
Http header	X-trace-id	M
SOAP Header	SOAP Header	M
SOAP Body	taxYear	M
SOAP Body	employerReg	M
SOAP Body	payrollRunReference	M
SOAP Body	submissionID	M
SOAP Body	softwareUsed	M
SOAP Body	softwareVersion	M
SOAP Body	agentTAIN	O

Table 30:Parameters for SOAP request of contribution error details API.

3.2.1.4 Sample Request

```

<soap:Envelope xmlns:soap="http://www.w3.org/2003/05/soap-envelope"
xmlns:con="http://contributionerror.dto.ws.payroll.b2b.dsp.com"> soap:Header<wsse:Security
xmlns:wsse="http://docs.oasis-open.org/wss/2004/01/oasis-200401-wss-wssecurity-secext-1.0.xsd"
xmlns:wssu="http://docs.oasis-open.org/wss/2004/01/oasis-200401-wss-wssecurity-utility-
1.0.xsd"><wsse:BinarySecurityToken EncodingType="http://docs.oasis-open.org/wss/2004/01/oasis-200401-wss-soap-
message-security-1.0#Base64Binary" ValueType="http://docs.oasis-open.org/wss/2004/01/oasis-200401-wss-x509-token-
profile-1.0#X509v3" wsu:Id="X509">MIIFejCCA2KgAwIBAgIU6EgI958J+w3hYbtPc+wLzzFo+...truncated<wsu:Timestamp
wsu:Id="timeStamp">wsu:Created2025-08-12T14:05:06.000Zwsu:Expires2025-08-12T15:35:06.000Z<ds:Signature
xmlns:ds="http://www.w3.org/2000/09/xmldsig#">ds:SignedInfo<ds:CanonicalizationMethod
Algorithm="http://www.w3.org/2001/10/xml-exc-c14n#" /><ds:SignatureMethod
Algorithm="http://www.w3.org/2001/04/xmldsig-more#rsa-sha512" /><ds:Reference
URI="#messageBody">ds:Transforms<ds:Transform Algorithm="http://www.w3.org/2001/10/xml-exc-
c14n#" /><ds:DigestMethod
Algorithm="http://www.w3.org/2001/04/xmenc#sha512" />ds:DigestValueZbf3zgAtsVcFHof7HjdMm6YChPgj4B...truncate
d<ds:Reference URI="#timeStamp">ds:Transforms<ds:Transform Algorithm="http://www.w3.org/2001/10/xml-exc-
c14n#" /><ds:DigestMethod
Algorithm="http://www.w3.org/2001/04/xmenc#sha512" />ds:DigestValueoVpc8FXDO6BSCnJJAV0XKDRZEwq1F...truncat
edds:SignatureValueedsK7qhfeLjnKqKBZmBsFe9nqf1ey2l...truncatedds:KeyInfowsse:SecurityTokenReference<wsse:Referen
ce URI="#X509" /><soap:Body xmlns:wssu="http://docs.oasis-open.org/wss/2004/01/oasis-200401-wss-wssecurity-utility-
1.0.xsd" wsu:Id="messageBody">

```

```

<con:ContributionSubmissionErrorRequest>
  <con:taxYear>2025</con:taxYear>
<con:employerReg>1234567T</con:employerReg>
<con:payrollRunReference>Week_01</con:payrollRunReference>
<con:submissionID>Week_01_02</con:submissionID>
<con:softwareUsed>Payroll Software</con:softwareUsed>
<con:softwareVersion>1.2.2</con:softwareVersion>
<!--Optional: -->
<con:agentTAIN>99999A</con:agentTAIN>
</con:ContributionSubmissionErrorRequest>

```

3.4.4.2 Sample SOAP response

```

<SOAP-ENV:Envelope xmlns:SOAP-ENV="http://www.w3.org/2003/05/soap-envelope" xmlns:wsu="http://docs.oasis-open.org/wss/2004/01/oasis-200401-wss-wssecurity-utility-1.0.xsd">
  <SOAP-ENV:Header/>
  <SOAP-ENV:Body wsu:Id="messageBody">
<ns2:ContributionSubmissionErrorResponse
  xmlns:ns2="http://contributionerror.dto.ws.payroll.b2b.dsp.com">
  <ns2:inputFields>
    <ns2:taxYear>2025</ns2:taxYear>
    <ns2:employerReg>1234567T</ns2:employerReg>
    <ns2:payrollRunReference>Week_01</ns2:payrollRunReference>
    <ns2:submissionID>Week_01_02</ns2:submissionID>
    <ns2:softwareUsed>Payroll Software</ns2:softwareUsed>
    <ns2:softwareVersion>1.2.2</ns2:softwareVersion>
    <!--Optional: -->
    <ns2:agentTAIN>99999A</ns2:agentTAIN>
  </ns2:inputFields>
  <ns2:data>
    <ns2:contributionErrors>
      <ns2:contributionError>
        <ns2:code>MFFERR001</ns2:code>
        <ns2:message>Incorrect Employer Reg ID.</ns2:message>
      </ns2:contributionError>
    </ns2:contributionErrors>
    <ns2:contributionWarnings>
      <ns2:contributionWarning>
        <ns2:code>MFFWAR102</ns2:code>
        <ns2:message>Sepa DD Mandate is not set up for the employer</ns2:message>
      </ns2:contributionWarning>
    </ns2:contributionWarnings>
    <ns2:recordErrors>
      <ns2:recordError>
        <ns2:code>MFFERR025</ns2:code>
        <ns2:message>Gross Pay is missing.</ns2:message>
        <ns2:lineItemID>Week_01_02_100</ns2:lineItemID>
      </ns2:recordError>
    </ns2:recordErrors>
    <ns2:recordWarnings>
      <ns2:recordWarning>
        <ns2:code>MFFWAR002</ns2:code>
        <ns2:message>AEPN not matched for the records available in the
system.</ns2:message>
        <ns2:lineItemID>Week_01_02_101</ns2:lineItemID>
      </ns2:recordWarning>

```

```

        </ns2:recordWarnings>
    </ns2:data>
    <ns2:errors>
        <ns2:empty>true</ns2:empty>
        <ns2:errorDetails />
    </ns2:errors>
</ns2:ContributionSubmissionErrorResponse>
</SOAP-ENV:Body>
</SOAP-ENV:Envelope>

```

Error scenario.

```

<SOAP-ENV:Envelope xmlns:SOAP-ENV="http://www.w3.org/2003/05/soap-envelope" xmlns:wsu="http://docs.oasis-open.org/wss/2004/01/oasis-200401-wss-wssecurity-utility-1.0.xsd">
  <SOAP-ENV:Header/>
  <SOAP-ENV:Body wsu:Id="messageBody">
    <ns2:ContributionSubmissionErrorResponse
      xmlns:ns2="http://contributionerror.dto.ws.payroll.b2b.dsp.com">
      <ns2:inputFields>
        <ns2:taxYear>2025</ns2:taxYear>
        <ns2:employerReg>1234567T</ns2:employerReg>
        <ns2:payrollRunReference>Week_01</ns2:payrollRunReference>
        <ns2:submissionID>Week_01_02</ns2:submissionID>
        <ns2:softwareUsed>Payroll Software</ns2:softwareUsed>
        <ns2:softwareVersion>1.2.2</ns2:softwareVersion>
        <!--Optional: -->
        <ns2:agentTAIN>99999A</ns2:agentTAIN>
      </ns2:inputFields>
      <ns2:errors>
        <ns2:empty>>false</ns2:empty>
        <ns2:errorDetails>
          <ns2:error>
            <ns2:errorCode>MFFERR091</ns2:errorCode>
            <ns2:message>No Data Found with input parameters</ns2:message>
          </ns2:error>
        </ns2:errorDetails>
      </ns2:errors>
    </ns2:ContributionSubmissionErrorResponse>
  </SOAP-ENV:Body>
</SOAP-ENV:Envelope>

```

3.5 Contribution Reconciliation Summary

Attribute	Value
URI REST	/payrollapi/v1/contributions/reconsummary/{employerReg}/{periodStartDate}/{periodEndDate}
URI SOAP	/payrollapi/v2/contributions/reconsummary
Supported methods	GET
Description	This service can be used to reconcile contribution submission data for a chosen period of time.
Input Media type (MIME)	application/soap+xml, application/json
Status code for successful response	200
Response	As detailed in below
Output Media type	application/soap+xml, application/json

Table 31:Attributes of contribution reconciliation summary API

3.5.1 Request input fields

3.5.1.1 Headers

Field Name	Field Description	Mandatory	Example
Accept	Indicates the media types the client can handle	M	application/json
Content-Type	Indicates the media types the client can handle	M	application/json
Cache-Control	Specifies caching directives for the client (e.g., no-cache, max-age=3600).	M	no-cache
X-trace-id	Used for end-to-end tracing. UUID to be generated by payroll software for the request. Regex: <code>^[0-9a-fA-F]{8}-[0-9a-fA-F]{4}-[1-5][0-9a-fA-F]{3}-[89abAB][0-9a-fA-F]{3}-[0-9a-fA-F]{12}\$</code>	M	550e8400-e29b-41d4-a716-446655440000
Date/X-Date	Date & time of creation of the request. Date or X-Date can be used as the field name.	M	2018-01-01T12:00:00.000Z
Host	Hostname of the service being called. This would be a fixed value for different environments. EXT: b2b.myfuturefund-nonprod.ie	M	b2b.myfuturefund-nonprod.ie
Signature	Digital signature generated using the private key of the ROS certificate. Should consist of keyId, algorithm, headers and signature. This is identical to the field expected by Revenue	M	Signature::keyId="MIIFejC..truncated", algorithm="rsa-sha512", headers="(request-target) host date",signature="dFQv2+RsH2..truncated"
periodStartDate	Should be the start date from which the payroll run reference would be fetched for an employer. Start date will be considered based on the contribution submission date, for the payroll run reference.	M	2025-12-12
periodEndDate	Should be the end date upto which the payroll run reference would be fetched. The gap between start date and end date should not be more than 3 months. End date will be considered based on the contribution submission date, for the payroll run reference.	M	2025-12-24
employerReg	Should be the same as the employer registration number submitted for the contribution.	M	1234567T
agentTAIN	Tax Advisor Identification Number. Required if request submission is done by agent on behalf of employer using ROS agent certs.	O	99999A
softwareUsed	Name of payroll software used for calling the API. This will be used for helpdesk purposes.	M	Payroll Software
softwareVersion	Version of payroll software used for calling the API. This will be used for helpdesk purposes.	M	1.2.2

Table 32:Request headers of contribution reconciliation summary API

3.5.2 Response output fields

3.5.2.1 Headers

Field Name	Field Description	Example
Accept	Media type of the response	application/json
Content-Type	Media type of the response	application/json
Cache-Control	Specifies caching directives for the client. This will always be set to no-cache	no-cache

Field Name	Field Description	Example
Status-code	http status code	200 for success
X-trace-id	Used for end-to-end tracing. UUID which was sent as part of the request.	550e8400-e29b-41d4-a716-446655440000

Table 33:Response headers of contribution reconciliation summary API

3.5.2.2 Data items

The following fields will be returned.

Field Name	Field Description	Repeats	Example
periodSummary	Structural element of the response	N	
countPayrollRuns	Total count of distinct payroll runs within the period start date and period end date	N	1
totalEEContributions	Sum of all EE contributions across the payroll run (including success and failure records)	N	848.46
totalERContributions	Sum of all ER contributions across the payroll run (including success and failure records)	N	848.46
payrollRunDetails	Structural element of the response		
payrollRunReference	The payroll run reference submitted for the contribution.	Y	Week_01
taxYear	Same as the tax year for the submitted contribution	Y	2025
contributionSubmissionDate	Contribution File Upload Date	Y	2025-12-12
countLineItemsWithSuccess	Count of distinct line items with success within a payroll run reference	Y	10
countLineItemsWithError	Count of distinct line items with error within a payroll run reference	Y	10
totalERContributionsWithSuccess	Sum of contribution amount for the all the ER contributions for the line items with status as "Success"	Y	424.23
totalEEContributionsWithSuccess	Sum of contribution amount for the all the EE contributions for the line items with status as "Success"	Y	424.23
totalERContributionsWithError	Sum of contribution amount for the all the ER contributions for the line items with status as "Error"	Y	424.23
totalEEContributionsWithError	Sum of contribution amount for the all the EE contributions for the line items with status as "Error"	Y	424.23

Table 34:Response data items of contribution reconciliation summary API.

3.5.3 JSON Sample

3.5.3.1 Request structure

URL::

<https://<b2b.domainName>/payrollapi/v1/contributions/reconsummary/{employerReg}/{periodStartDate}/{periodEndDate}>

Input type / Response	Field Name	Mandatory
Http header	Accept	M
Http header	Content-Type	M
Http header	Cache-Control	M
Http header	X-trace-id	M
Http header	Date/X-Date	M
Http header	Host	M
Http header	Signature	M
Path Param	periodStartDate	M
Path Param	periodEndDate	M
Path Param	employerReg	M
Query Param	agentTAIN	O
Query Param	softwareUsed	M
Query Param	softwareVersion	M

Table 35:Parameters for REST request of contribution reconciliation summary API.

3.5.3.2 Sample Request

URI : /payrollapi/v1/contributions/reconsummary/1234567T/2025-10-12/2025-12-12

Request Headers :

Http header Accept application/json
 Http header Content-Type application/json; charset=UTF-8
 Http header Cache-Control no-cache
 Http header X-trace-id 550e8400-e29b-41d4-a716-446655440000
 Http header Date/X-Date 2018-01-01T12:00:00.000Z
 Http header Host b2b.myfuturefund-nonprod.ie
 Http header Signature Signature::keyId="MIIFejC..truncated",algorithm="rsa-sha512",headers="request-target date host",signature="dFQv2+RsH2..truncated"

PathParams:-

employerReg : "1234567T"
 periodStartDate : "2025-10-12"
 periodEndDate : "2025-12-12"

Query params:

softwareUsed - "Payroll_Software"
 softwareVersion - "1.2.2"
 agentTAIN - "99999A"

headers & Signing string :

headers="(request-target) date host"

(request-target): get /payrollapi/v1/contributions/reconsummary/1234567T/2025-10-12/2025-12-12?softwareUsed=Payroll_Software&softwareVersion=1.2.2&agentTAIN=99999A
 date: 2018-01-01T12:00:00.000Z
 host: b2b.myfuturefund-nonprod.ie

Please note the order of the query parameters in the signing string.

This sample is for the given headers. It will vary for a different choice of headers.

3.5.3.3 Sample JSON response

Success scenario

Response Headers :

Http header Accept application/json
 Http header Content-Type application/json
 Http header Cache-Control no-cache
 Http header Status-code 200
 Http header X-trace-id 550e8800-e29b-41d4-a716-446655440000"

Response body:

```
{
  "inputFields": {
    "employerReg": "1234567T",
    "periodStartDate": "2025-12-12",
    "periodEndDate": "2025-12-24",
    "softwareUsed": "Payroll Software",
    "softwareVersion": "1.2.2",
    "agentTAIN": "99999A"
  },
  "data" :{
    "periodSummary": {
      "countPayrollRuns": 1,
      "totalEEContributions": 848.46,
      "totalERContributions": 848.46
    },
    "payrollRunDetails": [
      {
        "payrollRunReference": "Week_01",
```

```

    "taxYear":2025,
    "contributionSubmissionDate": "2025-12-12",
    "countLineItemsWithSuccess": 10,
    "countLineItemsWithError": 10,
    "totalEEContributionsWithSuccess ": 424.23,
    "totalERContributionsWithSuccess ": 424.23,
    "totalEEContributionsWithError ": 424.23,
    "totalERContributionsWithError ": 424.23
  },
  {
    "payrollRunReference": "Week_02",
    "taxYear":2025,
    "contributionSubmissionDate": "2025-12-19",
    "countLineItemsWithSuccess": 10,
    "countLineItemsWithError": 10,
    "totalEEContributionsWithSuccess ": 424.23,
    "totalERContributionsWithSuccess ": 424.23,
    "totalEEContributionsWithError ": 424.23,
    "totalERContributionsWithError ": 424.23
  }
]
},
"errors": {
  "empty": true,
  "errorDetails": [
    {
      "errorCode": "",
      "message": ""
    }
  ]
}
}

```

Error scenario

Response Headers :

Http header	Accept	application/json
Http header	Content-Type	application/json
Http header	Cache-Control	no-cache
Http header	Status-code	200
Http header	X-trace-id	550e8400-e29b-41d4-a716-446655440000

Response body:

```

{
  "inputFields": {
    "employerReg": "1234567T",
    "periodStartDate": "2025-12-12",
    "periodEndDate": "2025-12-24",
    "softwareUsed": "Payroll Software",
    "softwareVersion": "1.2.2",
    "agentTAIN": "99999A"
  },
  "data": {
    "periodSummary": {
      "countPayrollRuns": 0,
      "totalEEContributions": 0.00,
      "totalERContributions": 0.00
    },
    "payrollRunDetails": []
  },
  "errors": {
    "empty": false,

```

```

"errorDetails": [
  {
    "errorCode": "MFFERR091",
    "message": "No Data Found with input parameters"
  }
]
}
}
}

```

3.5.4 SOAP Sample

3.5.4.1 Request structure

URL:: https://<b2b.domainName>/payrollapi/v2/contributions/reconsummary

Input type / Response	Field Name	Mandatory
Http header	Accept	M
Http header	Content-Type	M
Http header	Cache-Control	M
Http header	X-trace-id	M
SOAP Header	SOAP Header	M
SOAP Body	periodStartDate	M
SOAP Body	periodEndDate	M
SOAP Body	employerReg	M
SOAP Body	agentTAIN	O
SOAP Body	softwareUsed	M
SOAP Body	softwareVersion	M

Table 36:Parameters for SOAP request of contribution reconciliation summary API.

3.2.1.4 Sample Request

```

<soapenv:Envelope xmlns:soapenv="http://www.w3.org/2003/05/soap-envelope"
xmlns:rec="http://reconsummary.dto.ws.payroll.b2b.dsp.com">

```

```

  <soapenv:Header><wsse:Security xmlns:wsse="http://docs.oasis-open.org/wss/2004/01/oasis-200401-wss-wssecurity-
secect-1.0.xsd" xmlns:wsu="http://docs.oasis-open.org/wss/2004/01/oasis-200401-wss-wssecurity-utility-
1.0.xsd"><wsse:BinarySecurityToken EncodingType="http://docs.oasis-open.org/wss/2004/01/oasis-200401-wss-soap-
message-security-1.0#Base64Binary" ValueType="http://docs.oasis-open.org/wss/2004/01/oasis-200401-wss-x509-token-
profile-1.0#X509v3"
wsu:Id="X509">MIIFejCCA2KgAwIBAgIU4iug1tWdfc9meEhFUpldI8E3b8wDQ...truncated</wsse:BinarySecurityToken><w
su:Timestamp wsu:Id="timeStamp"><wsu:Created>2025-08-12T14:06:03.000Z</wsu:Created><wsu:Expires>2025-08-
12T15:36:03.000Z</wsu:Expires></wsu:Timestamp><ds:Signature
xmlns:ds="http://www.w3.org/2000/09/xmldsig#"><ds:SignedInfo><ds:CanonicalizationMethod
Algorithm="http://www.w3.org/2001/10/xml-exc-c14n#" /><ds:SignatureMethod
Algorithm="http://www.w3.org/2001/04/xmldsig-more#rsa-sha512" /><ds:Reference
URI="#messageBody"><ds:Transforms><ds:Transform Algorithm="http://www.w3.org/2001/10/xml-exc-
c14n#" /></ds:Transforms><ds:DigestMethod
Algorithm="http://www.w3.org/2001/04/xmldsig-more#sha512" /><ds:DigestValue>CNzTikYyCceWEUoyf79AqK4uhBtwL...truncat
ed</ds:DigestValue></ds:Reference><ds:Reference URI="#timeStamp"><ds:Transforms><ds:Transform
Algorithm="http://www.w3.org/2001/10/xml-exc-c14n#" /></ds:Transforms><ds:DigestMethod
Algorithm="http://www.w3.org/2001/04/xmldsig-more#sha512" /><ds:DigestValue>KyFeWaXsF5ZUSOCajw6mxU03rOov0dtfgiT...
truncated</ds:DigestValue></ds:Reference></ds:SignedInfo><ds:SignatureValue>HRkkYt5LIITU7ndXu04E1vPLrldRbZRWW
cY+f+WEMh...truncated</ds:SignatureValue><ds:KeyInfo><wsse:SecurityTokenReference><wsse:Reference
URI="#X509" /></wsse:SecurityTokenReference></ds:KeyInfo></ds:Signature></wsse:Security></soapenv:Header>
  <soapenv:Body xmlns:wsu="http://docs.oasis-open.org/wss/2004/01/oasis-200401-wss-wssecurity-utility-1.0.xsd"
wsu:Id="messageBody">
<rec:ReconSummaryRequest>

```

```

<rec:employerReg>1234567T</rec:employerReg>
  <rec:periodStartDate>2025-12-12</rec:periodStartDate>
  <rec:periodEndDate>2025-12-24</rec:periodEndDate>
  <rec:softwareUsed>Payroll Software</rec:softwareUsed>
  <rec:softwareVersion>1.2.2</rec:softwareVersion>
  <!--Optional: -->
  <rec:agentTAIN>99999A</rec:agentTAIN>
</rec:ReconSummaryRequest>
</soapenv:Body>
</soapenv:Envelope>

```

3.5.4.2 Sample SOAP response

```

<SOAP-ENV:Envelope xmlns:SOAP-ENV="http://www.w3.org/2003/05/soap-envelope" xmlns:wsu="http://docs.oasis-open.org/wss/2004/01/oasis-200401-wss-wssecurity-utility-1.0.xsd">
  <SOAP-ENV:Header/>
  <SOAP-ENV:Body wsu:Id="messageBody">
<ns2:ReconSummaryResponse
  xmlns:ns2="http://reconsummary.dto.ws.payroll.b2b.dsp.com">
  <ns2:inputFields>
    <ns2:employerReg>1234567T</ns2:employerReg>
    <ns2:periodStartDate>2025-12-12</ns2:periodStartDate>
    <ns2:periodEndDate>2025-12-24</ns2:periodEndDate>
    <ns2:softwareUsed>Payroll Software</ns2:softwareUsed>
    <ns2:softwareVersion>1.2.2</ns2:softwareVersion>
    <!--Optional: -->
    <ns2:agentTAIN>99999A</ns2:agentTAIN>
  </ns2:inputFields>
  <ns2:data>
    <ns2:periodSummary>
      <ns2:countPayrollRuns>1</ns2:countPayrollRuns>
      <ns2:totalEEContributions>848.46</ns2:totalEEContributions>
      <ns2:totalERContributions>848.46</ns2:totalERContributions>
    </ns2:periodSummary>
    <ns2:payrollRunDetails>
      <ns2:payrollRunDetail>
        <ns2:payrollRunReference>Week_01</ns2:payrollRunReference>
        <ns2:taxYear>2025</ns2:taxYear>
        <ns2:contributionSubmissionDate>2025-12-12</ns2:contributionSubmissionDate>
        <ns2:countLineItemsWithSuccess>10</ns2:countLineItemsWithSuccess>
        <ns2:countLineItemsWithError>10</ns2:countLineItemsWithError>
        <ns2:totalERContributionsWithSuccess>424.23</ns2:totalERContributionsWithSuccess>
        <ns2:totalEEContributionsWithSuccess>424.23</ns2:totalEEContributionsWithSuccess>
        <ns2:totalERContributionsWithError>424.23</ns2:totalERContributionsWithError>
        <ns2:totalEEContributionsWithError>424.23</ns2:totalEEContributionsWithError>
      </ns2:payrollRunDetail>
      <ns2:payrollRunDetail>
        <ns2:payrollRunReference>Week_02</ns2:payrollRunReference>
        <ns2:taxYear>2025</ns2:taxYear>
        <ns2:contributionSubmissionDate>2025-12-19</ns2:contributionSubmissionDate>
        <ns2:countLineItemsWithSuccess>10</ns2:countLineItemsWithSuccess>
        <ns2:countLineItemsWithError>10</ns2:countLineItemsWithError>
        <ns2:totalERContributionsWithSuccess>424.23</ns2:totalERContributionsWithSuccess>
        <ns2:totalEEContributionsWithSuccess>424.23</ns2:totalEEContributionsWithSuccess>
        <ns2:totalERContributionsWithError>424.23</ns2:totalERContributionsWithError>
        <ns2:totalEEContributionsWithError>424.23</ns2:totalEEContributionsWithError>
      </ns2:payrollRunDetail>
    </ns2:payrollRunDetails>
  </ns2:data>
</ns2:ReconSummaryResponse>

```

```

        </ns2:payrollRunDetails>
    </ns2:data>
    <ns2:errors>
        <ns2:empty>true</ns2:empty>
        <ns2:errorDetails />
    </ns2:errors>
</ns2:ReconSummaryResponse>
</SOAP-ENV:Body>
</SOAP-ENV:Envelope>

```

Error response

```

<SOAP-ENV:Envelope xmlns:SOAP-ENV="http://www.w3.org/2003/05/soap-envelope" xmlns:wsu="http://docs.oasis-open.org/wss/2004/01/oasis-200401-wss-wssecurity-utility-1.0.xsd">
  <SOAP-ENV:Header/>
  <SOAP-ENV:Body wsu:Id="messageBody">
    <ns2:ReconSummaryResponse
      xmlns:ns2="http://reconsummary.dto.ws.payroll.b2b.dsp.com">
      <ns2:inputFields>
        <ns2:employerReg>1234567T</ns2:employerReg>
        <ns2:periodStartDate>2025-12-12</ns2:periodStartDate>
        <ns2:periodEndDate>2025-12-24</ns2:periodEndDate>
        <ns2:softwareUsed>Payroll Software</ns2:softwareUsed>
        <ns2:softwareVersion>1.2.2</ns2:softwareVersion>
        <!--Optional: -->
        <ns2:agentTAIN>999999A</ns2:agentTAIN>
      </ns2:inputFields>
      <ns2:errors>
        <ns2:empty>>false</ns2:empty>
        <ns2:errorDetails>
          <ns2:error>
            <ns2:errorCode> MFFINTERR0004</ns2:errorCode>
            <ns2:message> Invalid employerReg.</ns2:message>
          </ns2:error>
        </ns2:errorDetails>
      </ns2:errors>
    </ns2:ReconSummaryResponse>
  </SOAP-ENV:Body>
</SOAP-ENV:Envelope>

```

3.6 Contribution Reconciliation Details

Attribute	Value
URI REST	/payrollapi/v1/contributions/recondetails/{taxYear}/{employerReg}/{payrollRunReference}
URI SOAP	/payrollapi/v2/contributions/recondetails
Supported methods	GET
Description	This service can be used to reconcile contribution submission data for a chosen payroll run reference for an employer for a tax year.
Input Media type (MIME)	application/soap+xml, application/json
Status code for successful response	200
Response	As detailed in below
Output Media type	application/soap+xml, application/json

Table 37:Attributes of contribution reconciliation details API

3.6.1 Request input fields

3.6.1.1 Headers

Field Name	Field Description	Mandatory	Example
Accept	Indicates the media types the client can handle	M	application/json
Content-Type	Indicates the media types the client can handle	M	application/json
Cache-Control	Specifies caching directives for the client (e.g., no-cache, max-age=3600).	M	no-cache
X-trace-id	Used for end-to-end tracing. UUID to be generated by payroll software for the request. Regex: <code>^[0-9a-fA-F]{8}-[0-9a-fA-F]{4}-[1-5][0-9a-fA-F]{3}-[89abAB][0-9a-fA-F]{3}-[0-9a-fA-F]{12}\$</code>	M	550e8400-e29b-41d4-a716-446655440000
Date/X-Date	Date & time of creation of the request. Date or X-Date can be used as the field name.	M	2018-01-01T12:00:00.000Z
Host	Hostname of the service being called. This would be a fixed value for different environments. EXT: b2b.myfuturefund-nonprod.ie	M	b2b.myfuturefund-nonprod.ie
Signature	Digital signature generated using the private key of the ROS certificate. Should consist of keyId, algorithm, headers and signature. This is identical to the field expected by Revenue	M	Signature::keyId="MIIIFejC..truncated", algorithm="rsa-sha512", headers="(request-target) host date",signature="dFQv2+Rsh2..truncated"
taxYear	Tax year for which the data is being submitted in the form YYYY	M	2025
employerReg	Should be the same as the employer registration number submitted for the contribution.	M	1234567T
payrollRunReference	Should be the same as the payroll run reference submitted for the contribution.	M	Week_01
agentTAIN	Tax Advisor Identification Number. Required if request submission is done by agent on behalf of employer using ROS agent certs.	O	99999A
softwareUsed	Name of payroll software used for calling the API. This will be used for helpdesk purposes.	M	Payroll Software
softwareVersion	Version of payroll software used for calling the API. This will be used for helpdesk purposes.	M	1.2.2
batchNumber	"Not required in the first call but required in subsequent requests. Used for pagination or batching of submissions which exceed 12,000 records. • First request value = 1 • Second request value = 2 Can be incremented to the max batch number returned as part of the API response to the first request"	O	3

Table 38: Request headers of contribution reconciliation details API

3.6.2 Response output fields

3.6.2.1 Headers

Field Name	Field Description	Example
Accept	Media type of the response	application/json
Content-Type	Media type of the response	application/json
Cache-Control	Specifies caching directives for the client. This will always be set to no-cache	no-cache
Status-code	http status code	200 for success
X-trace-id	Used for end-to-end tracing. UUID which was sent as part of the request.	550e8400-e29b-41d4-a716-446655440000

Table 39:Response headers of contribution reconciliation details API

3.6.2.2 Data items

The following fields will be returned.

Field Name	Field Description	Repeats	Example
totalCount	Count of distinct line items for the specific run reference including success and error records	N	24000
batchNumber	"Not required in the first call but required in subsequent requests. Used for pagination or batching of submissions which exceed 12,000 records. <ul style="list-style-type: none"> • First request value = 1 • Second request value = 2 Can be incremented to the max batch number returned as part of the API response to the first request"	N	1
maxBatchNumber	The maximum number of batches. So if there are 36,000 records then 3 will be returned (i.e., 36,000/12,000). To get the complete set of AEPN records for the employer it is necessary that number of requests sent is equal to the maxBatchNumber, each with request with and incremented batchNumber as explained above.	N	2
scheduleMemberSummary	It's a structural element		
submissionID	The submitted submissionID	Y	Week_01_02
lineitemID	lineitemID for the detail	Y	Week_01_02_100
employeePPSN	PPSN of employee	Y	7001790JA
employeeFirstName	Given first name of employee	Y	Róisín
employeeFamilyName	Given family name of employee	Y	O'Donnell
employmentID	Company given unique employee ID	Y	923456E
aepnNumber	AEPN number of the employee as given during contribution submission	Y	4
payDate	Pay date given during the submission	Y	2025-12-12
lineitemSubmissionStatus	This indicates the status of each line item form the contribution submission. Following can be the possible values INVALID - This status will come if a specific participant payroll record is invalidated by hard error. CONDUE - This status will appear when payroll / employer has submitted the entire payroll record and the payment is expected for the participant. SETTLED - This status will appear when payment for the due contribution is received and allocated to individual employee records.	Y	CONDUE

Field Name	Field Description	Repeats	Example
	DELETED – This status will appear against lineitems which were deleted.		
lineitemSubmissionDate	The date when the specific contribution line item was submitted.	Y	2025-12-12
grossPay	Pay in EUR of the employee. Supports 2 places of decimal. This is the Revenue gross pay.	Y	1500.00
erContribution	The current Employer contribution rate. For certain AEPN status the contribution amount will be 0. Refer to the table below.	Y	22.50
eeContribution	The current employee contribution rate. For certain AEPN status the contribution amount will be 0. Refer to the table below.	Y	22.50
payReason	The following reasons are accepted and are to be used as applicable. The code needs to be submitted Insufficient Nett Pay (Code: INPA) Pay Adjustment (Code: PAADJ) Removal of employment Exit Date (Code: ROEED)	Y	PAADJ
exitDate	Exit/Leaving date of the employee from the employment if applicable	Y	2025-12-12

Table 40:Response data items of contribution reconciliation details API.

3.6.3 JSON Sample

3.6.3.1 Request structure

URL::

https://<b2b.domainName>/payrollapi/v1/contributions/recondetails/{taxYear}/{employerReg}/{payrollRunReference}

Input type / Response	Field Name	Mandatory
Http header	Accept	M
Http header	Content-Type	M
Http header	Cache-Control	M
Http header	Status-code	M
Http header	X-trace-id	M

Table 41:Parameters for REST request of contribution reconciliation details API.

3.6.3.2 Sample Request

URI : /payrollapi/v1/contributions/recondetails/2025/1234567T/Week_01

Request Headers :

Http header Accept application/json
 Http header Content-Type application/json; charset=UTF-8
 Http header Cache-Control no-cache
 Http header X-trace-id 550e8400-e29b-41d4-a716-446655440000
 Http header Date/X-Date 2018-01-01T12:00:00.000Z
 Http header Host b2b.myfuturefund-nonprod.ie
 Http header Signature Signature::keyId="MIIFejC..truncated",algorithm="rsa-sha512",headers="request-target date host",signature="dFQv2+RsH2..truncated"

Path Params :

taxYear : 2025
 employerReg : "1234567T"
 payrollRunReference : "Week_01"

Query Params :

softwareUsed - "Payroll_Software"
 softwareVersion - "1.2.2"
 agentTAIN : "99999A"
 batchNumber : 3

headers & Signing string :

```
headers="(request-target) date host"
```

```
(request-target): get
```

```
/payrollapi/v1/contributions/recondetails/2025/1234567T/Week_01?softwareUsed=Payroll_Software&softwareVersion=1.2.2&agentTAIN=99999A&batchNumber=3
```

```
date: 2018-01-01T12:00:00.000Z
```

```
host: b2b.myfuturefund-nonprod.ie
```

Please note the order of the query parameters in the signing string.

This sample is for the given headers. It will vary for a different choice of headers.

3.6.3.3 Sample JSON response

Success scenario

Response Headers :

Http header	Accept	application/json
Http header	Content-Type	application/json
Http header	Cache-Control	no-cache
Http header	Status-code	200
Http header	X-trace-id	550e8400-e29b-41d4-a716-446655440000

Response body:

```
{
  "inputFields": {
    "taxYear": 2025,
    "employerReg": "1234567T",
    "payrollRunReference": "Week_01",
    "softwareUsed": "Payroll Software",
    "softwareVersion": "1.2.2",
    "agentTAIN": "99999A"
  },
  "data": {
    "totalCount": 24000,
    "batchNumber": 1,
    "maxBatchNumber": 2,
    "scheduleMemberSummary": [
      {
        "submissionID": "Week_01_02",
        "lineitemID": "Week_01_02_100",
        "employeePPSN": "7001790JA",
        "employeeFirstName": "Róisín",
        "employeeFamilyName": "O'Donnell",
        "employmentID": "923456E",
        "aepnNumber": 1,
        "payDate": "2025-12-12",
        "lineitemSubmissionStatus": "CONDUE",
        "lineitemSubmissionDate": "2025-12-12",
        "grossPay": 1500.00,
        "erContribution": 22.50,
        "eeContribution": 22.50,
        "payReason": "",
        "exitDate": "2025-12-12"
      }
    ]
  },
  "errors": {
```

```

    "empty": true,
    "errorDetails": [
      {
        "errorCode": "",
        "message": ""
      }
    ]
  }
}

```

Error scenario

Response Headers :

Http header Accept application/json
 Http header Content-Type application/json
 Http header Cache-Control no-cache
 Http header Status-code 200
 Http header X-trace-id 550e8400-e29b-41d4-8716-446655440000

Response body:

```

{
  "inputFields": {
    "taxYear": 2025,
    "employerReg": "1234567T",
    "payrollRunReference": "Week_01",
    "softwareUsed": "Payroll Software",
    "softwareVersion": "1.2.2",
    "agentTAIN": "99999A"
  },
  "data": {
    "totalCount": 1,
    "batchNumber": 1,
    "maxBatchNumber": 1,
    "scheduleMemberSummary": []
  },
  "errors": {
    "empty": false,
    "errorDetails": [
      {
        "errorCode": "MFFERR091",
        "message": " No Data Found with input parameters"
      }
    ]
  }
}

```

3.6.4 SOAP Sample

3.6.4.1 Request structure

URL:: https://<b2b.domainName>/payrollapi/v2/contributions/recondetails

Input type / Response	Field Name	Mandatory
Http header	Accept	M
Http header	Content-Type	M
Http header	Cache-Control	M
Http header	X-trace-id	M
SOAP Header	SOAP Header	M
SOAP Body	taxYear	M
SOAP Body	employerReg	M
SOAP Body	payrollRunReference	M
SOAP Body	agentTAIN	O

Input type / Response	Field Name	Mandatory
SOAP Body	softwareUsed	M
SOAP Body	softwareVersion	M
SOAP Body	batchNumber	O

Table 42:Parameters for SOAP request of contribution reconciliation details API.

3.2.1.4 Sample Request

```
<soapenv:Envelope xmlns:soapenv="http://www.w3.org/2003/05/soap-envelope"
xmlns:rec="http://reconpayrollrundetail.dto.ws.payroll.b2b.dsp.com">
<soapenv:Header><wsse:Security xmlns:wsse="http://docs.oasis-open.org/wss/2004/01/oasis-200401-wss-wssecurity-
secext-1.0.xsd" xmlns:wsu="http://docs.oasis-open.org/wss/2004/01/oasis-200401-wss-wssecurity-utility-
1.0.xsd"><wsse:BinarySecurityToken EncodingType="http://docs.oasis-open.org/wss/2004/01/oasis-200401-wss-soap-
message-security-1.0#Base64Binary" ValueType="http://docs.oasis-open.org/wss/2004/01/oasis-200401-wss-x509-token-
profile-1.0#X509v3"
wsu:id="X509">MIIFejCCA2KgAwIBAgIU6EgI958J+w3hYbtPc+wLzzFo+...truncated</wsse:BinarySecurityToken><wsu:Time
stamp wsu:id="timeStamp"><wsu:Created>2025-08-12T14:06:32.000Z</wsu:Created><wsu:Expires>2025-08-
12T15:36:32.000Z</wsu:Expires></wsu:Timestamp><ds:Signature
xmlns:ds="http://www.w3.org/2000/09/xmldsig#"><ds:SignedInfo><ds:CanonicalizationMethod
Algorithm="http://www.w3.org/2001/10/xml-exc-c14n#" /><ds:SignatureMethod
Algorithm="http://www.w3.org/2001/04/xmldsig-more#rsa-sha512" /><ds:Reference
URI="#messageBody"><ds:Transforms><ds:Transform Algorithm="http://www.w3.org/2001/10/xml-exc-
c14n#" /></ds:Transforms><ds:DigestMethod
Algorithm="http://www.w3.org/2001/04/xmldsig-more#sha512" /><ds:DigestValue>Xs/zc0Euu57weDryh4UyN7gZ9KKoxLS...trun
cated</ds:DigestValue></ds:Reference><ds:Reference URI="#timeStamp"><ds:Transforms><ds:Transform
Algorithm="http://www.w3.org/2001/10/xml-exc-c14n#" /></ds:Transforms><ds:DigestMethod
Algorithm="http://www.w3.org/2001/04/xmldsig-more#sha512" /><ds:DigestValue>KBhKhG0AHTISwGTtKSt1EB3okTYeiZi...trunca
ted</ds:DigestValue></ds:Reference></ds:SignedInfo><ds:SignatureValue>NOTaXH6aLMa6F0Wc2eq/FUto+71vE6NmVydb
h8yvnlg1b/HMe9p/Erdxinqk...truncated</ds:SignatureValue><ds:KeyInfo><wsse:SecurityTokenReference><wsse:Referenc
e URI="#X509" /></wsse:SecurityTokenReference></ds:KeyInfo></ds:Signature></wsse:Security></soapenv:Header>
<soapenv:Body xmlns:wsu="http://docs.oasis-open.org/wss/2004/01/oasis-200401-wss-wssecurity-utility-1.0.xsd"
wsu:id="messageBody">
<rec:ReconPayrollRunDetailRequest>
<rec:taxYear>2025</rec:taxYear>
<rec:employerReg>1234567T</rec:employerReg>
<rec:payrollRunReference>Week_01</rec:payrollRunReference>
<rec:softwareUsed>Payroll Software</rec:softwareUsed>
<rec:softwareVersion>1.2.2</rec:softwareVersion>
<!--Optional: -->
<rec:agentTAIN>99999A</rec:agentTAIN>
<!--Optional: -->
<rec:batchNumber>3</rec:batchNumber>
</rec:ReconPayrollRunDetailRequest>
</soapenv:Body>
</soapenv:Envelope>
```

3.6.4.2 Sample SOAP response

```
<SOAP-ENV:Envelope xmlns:SOAP-ENV="http://www.w3.org/2003/05/soap-envelope" xmlns:wsu="http://docs.oasis-
open.org/wss/2004/01/oasis-200401-wss-wssecurity-utility-1.0.xsd">
<SOAP-ENV:Header/>
<SOAP-ENV:Body wsu:id="messageBody">
<b2b:ReconPayrollRunDetailResponse
xmlns:b2b="http://reconpayrollrundetail.dto.ws.payroll.b2b.dsp.com">
<b2b:inputFields>
<b2b:taxYear>2025</b2b:taxYear>
```

```

    <b2b:employerReg>1234567T</b2b:employerReg>
    <b2b:payrollRunReference>Week_01</b2b:payrollRunReference>
    <b2b:softwareUsed>Payroll Software</b2b:softwareUsed>
    <b2b:softwareVersion>1.2.2</b2b:softwareVersion>
    <!--Optional: -->
    <b2b:agentTAIN>99999A</b2b:agentTAIN>
  </b2b:inputFields>
  <b2b:data>
    <b2b:totalCount>24000</b2b:totalCount>
    <b2b:batchNumber>1</b2b:batchNumber>
    <b2b:maxBatchNumber>2</b2b:maxBatchNumber>
    <b2b:scheduleMemberSummary>
      <b2b:scheduleMember>
        <b2b:submissionID>Week_01_02</b2b:submissionID>
        <b2b:lineItemID>Week_01_02_100</b2b:lineItemID>
        <b2b:employeePPSN>7001790JA</b2b:employeePPSN>
        <b2b:employeeFirstName>Róisín</b2b:employeeFirstName>
        <b2b:employeeFamilyName>O'Donnell</b2b:employeeFamilyName>
        <b2b:employmentID>923456E</b2b:employmentID>
        <b2b:aepnNumber>4</b2b:aepnNumber>
        <b2b:payDate>2025-12-12</b2b:payDate>
        <b2b:lineitemSubmissionStatus>CONDUE</b2b:lineitemSubmissionStatus>
        <b2b:lineitemSubmissionDate>2025-12-12</b2b:lineitemSubmissionDate>
        <b2b:grossPay>1500.00</b2b:grossPay>
        <b2b:erContribution>22.50</b2b:erContribution>
        <b2b:eeContribution>22.50</b2b:eeContribution>
        <b2b:payReason>INPA</b2b:payReason>
        <b2b:exitDate>2025-12-12</b2b:exitDate>
      </b2b:scheduleMember>
    </b2b:scheduleMemberSummary>
  </b2b:data>
  <b2b:errors>
    <b2b:empty>true</b2b:empty>
    <b2b:errorDetails />
  </b2b:errors>
</b2b:ReconPayrollRunDetailResponse>
</SOAP-ENV:Body>
</SOAP-ENV:Envelope>

```

Error scenario.

```

<SOAP-ENV:Envelope xmlns:SOAP-ENV="http://www.w3.org/2003/05/soap-envelope" xmlns:wsu="http://docs.oasis-open.org/wss/2004/01/oasis-200401-wss-wssecurity-utility-1.0.xsd">
  <SOAP-ENV:Header/>
  <SOAP-ENV:Body wsu:Id="messageBody">
    <b2b:ReconPayrollRunDetailResponse
      xmlns:b2b="http://reconpayrollrundetail.dto.ws.payroll.b2b.dsp.com">
      <b2b:inputFields>
        <b2b:taxYear>2025</b2b:taxYear>
        <b2b:employerReg>1234567T</b2b:employerReg>
        <b2b:payrollRunReference>Week_01</b2b:payrollRunReference>
        <b2b:softwareUsed>Payroll Software</b2b:softwareUsed>
        <b2b:softwareVersion>1.2.2</b2b:softwareVersion>
        <!--Optional: -->
        <b2b:agentTAIN>99999A</b2b:agentTAIN>
      </b2b:inputFields>
    </b2b:ReconPayrollRunDetailResponse>
  </SOAP-ENV:Body>
</SOAP-ENV:Envelope>

```

```
<b2b:errors>
  <b2b:empty>>false</b2b:empty>
  <b2b:errorDetails>
    <b2b:error>
      <b2b:errorCode>MFFERR091</b2b:errorCode>
      <b2b:message>No Data Found with input parameters</b2b:message>
    </b2b:error>
  </b2b:errorDetails>
</b2b:errors>
</b2b:ReconPayrollRunDetailResponse>
</SOAP-ENV:Body>
</SOAP-ENV:Envelope>
```

4 Appendix

4.1 JSON Schema



JSON_SCHEMA_1.6.4
.zip

4.2 XML Schema



XML_SCHEMA_1.6.4.
2.zip

4.3 Errors & warnings register



Validation Rules and
Error Register 1.6.4.3.: